


| | | |
|---|--|--|
|  | DIREZIONE LAVORI PUBBLICI SETTORE EDILIZIA COMUNALE E SCOLASTICA SERVIZIO EDILIZIA SCOLASTICA TERRAFERMA Polo Tecnico ex Carbonifera Viale Ancona 63 30170 Mestre Venezia telefono 041 2749724 | C.I. 14352 R.U.P.: Paolo Bevilacqua |
|---|--|--|

Oggetto RIFACIMENTO INTONACI ESTERNI SCUOLA MEDIA BELLINI

Fase Progetto Esecutivo

Documento Elaborati grafici

| Revisione | Descrizione |
|-----------|-------------|
| 00 | |
| 01 | |
| 02 | |
| 03 | |
| 04 | |
| 05 | |

Elaborato da

Progettista

Lorita Caccin

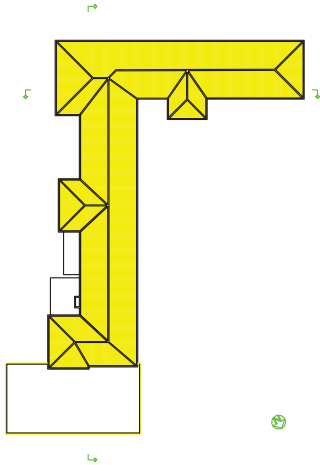
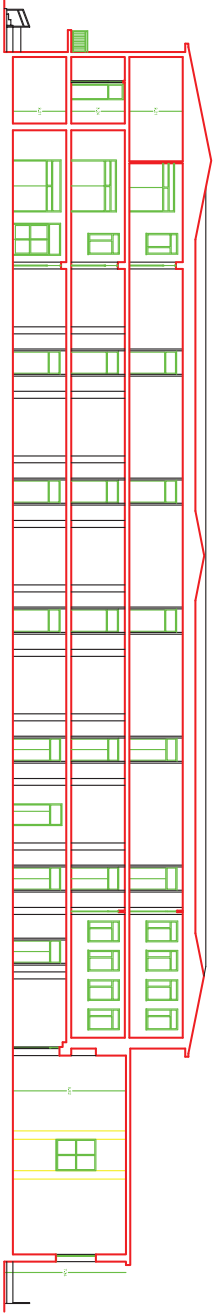
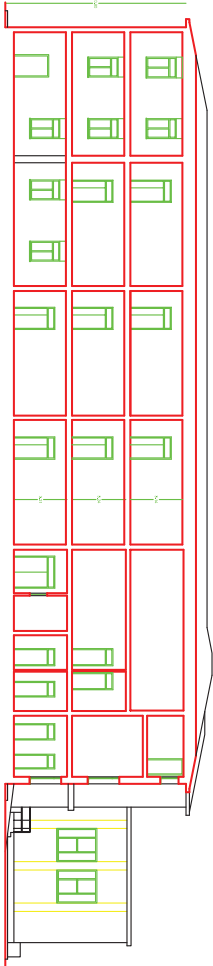
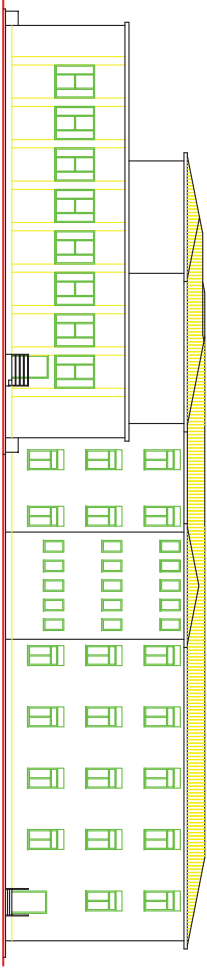
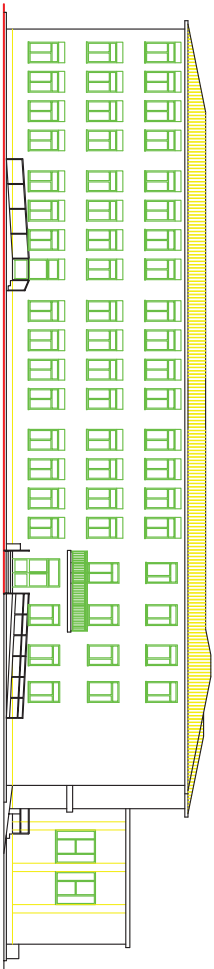
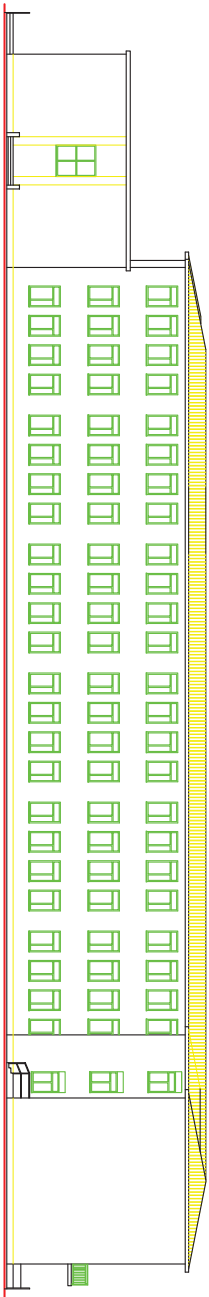
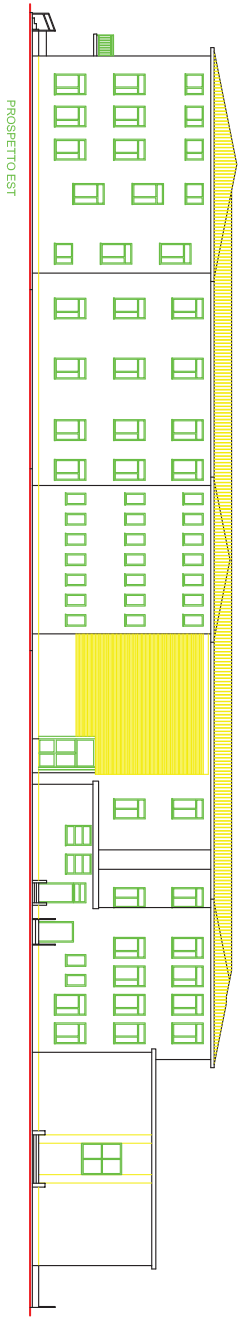
Verificato da
Validato da

R. U. P.
R. U. P.

Paolo Bevilacqua
Paolo Bevilacqua



SCUOLA MEDIA BELLINI
via Metauro 45
Mestre



SEZIONE LONGITUDINALE A-A

SEZIONE TRASVERSALE P-B