

LAGUNA DI VENEZIA: PASSATO, PRESENTE E FUTURO

Nozioni di idrodinamica lagunare:
maree, previsioni e interventi.



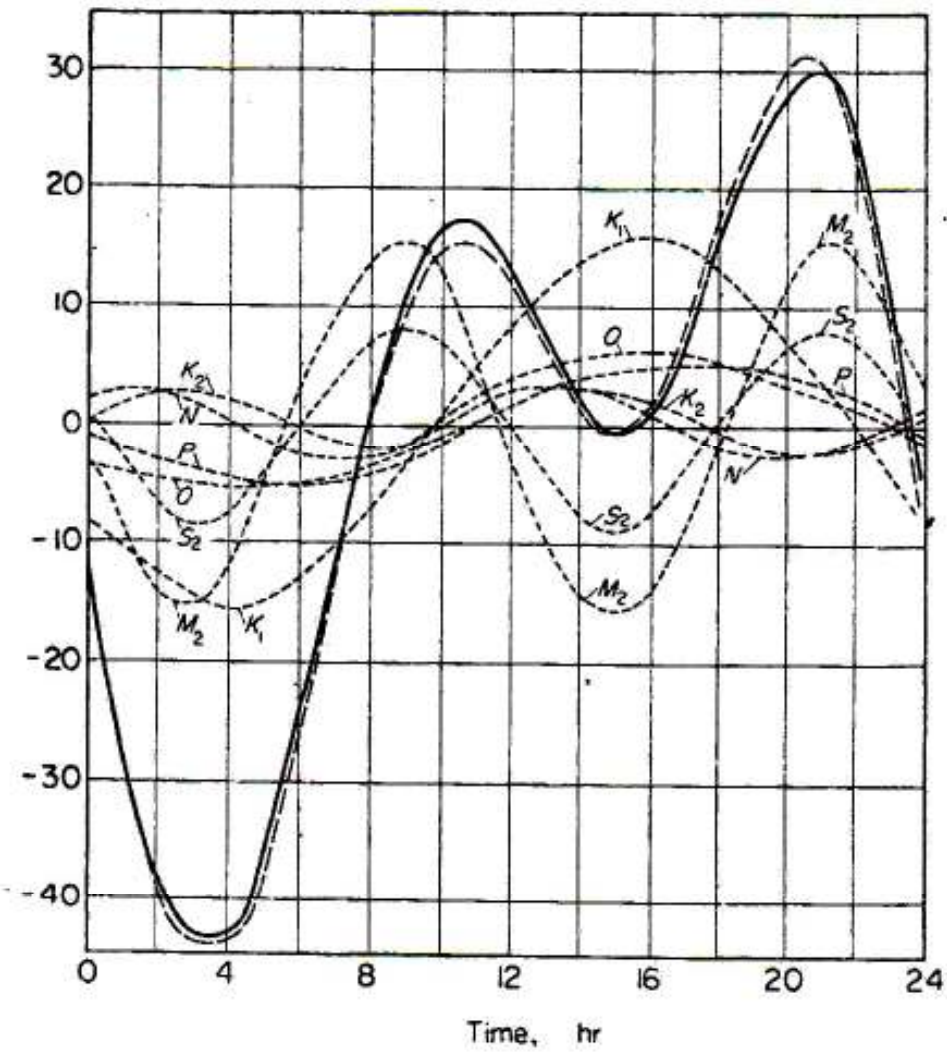
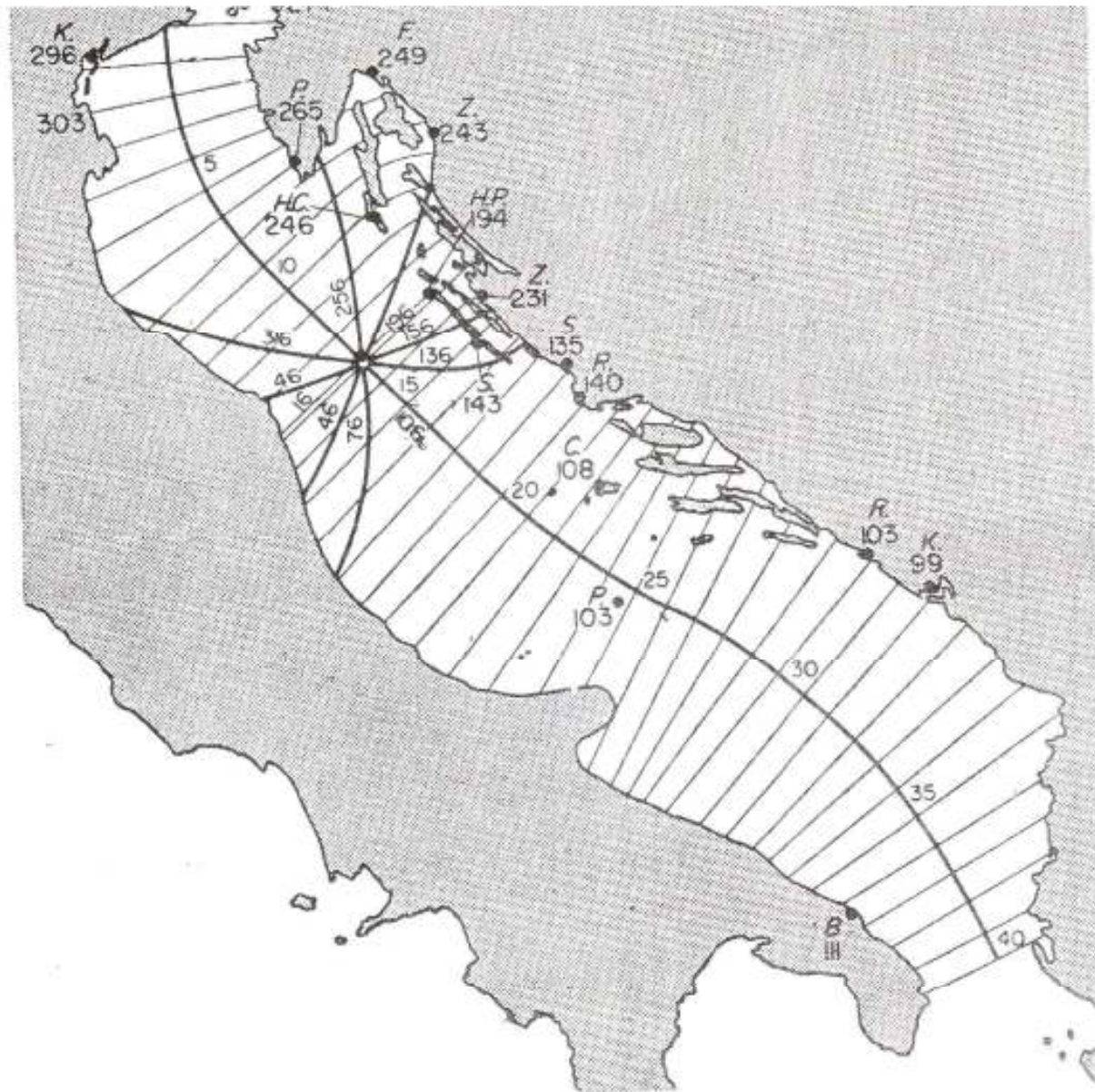


FIG. 127. Computation of the tide of Pola for 6 January 1909 (Full moon close to the winter solstice, very low water). — computed, - - - - observed tides.

**COSTANTI ARMONICHE DELLE MAREE
PUNTA DELLA SALUTE**

		M ₂	S ₂	N ₂	K ₂	K ₁	O ₁	P ₁	S ₁
A	(cm)	24.8	14.5	4.1	4.3	17.8	5.2	5.8	1.5
κ		308°	318°	307°	311°	86°	76°	83°	275°



11. M_2 tide in the Adria. Numbers at stations are the g values according to Sterneck. Transverse lines correspond to the sections used for the theoretical computation.

Combined longitudinal and transverse oscillations give the tidal picture

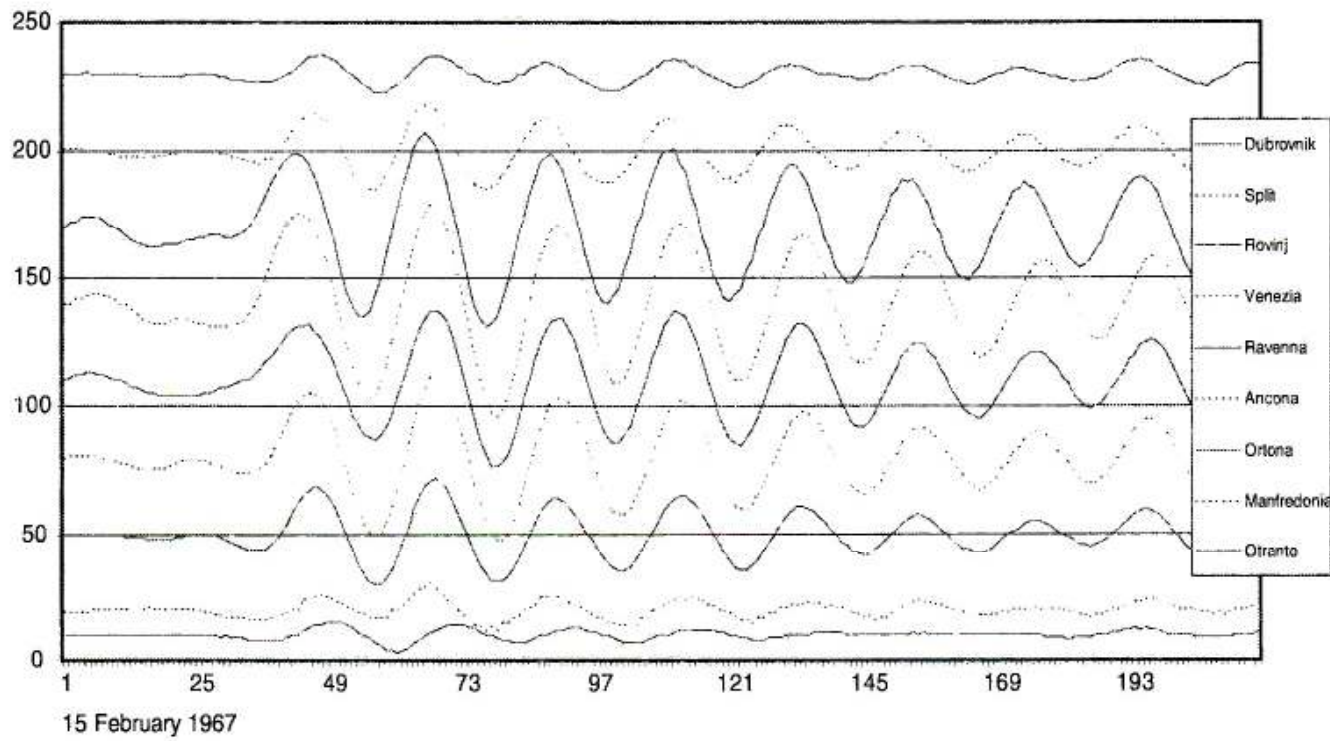


Fig. 9.3 Simultaneous plots of a seiche from February 1967 for nine stations in the Adriatic Sea.

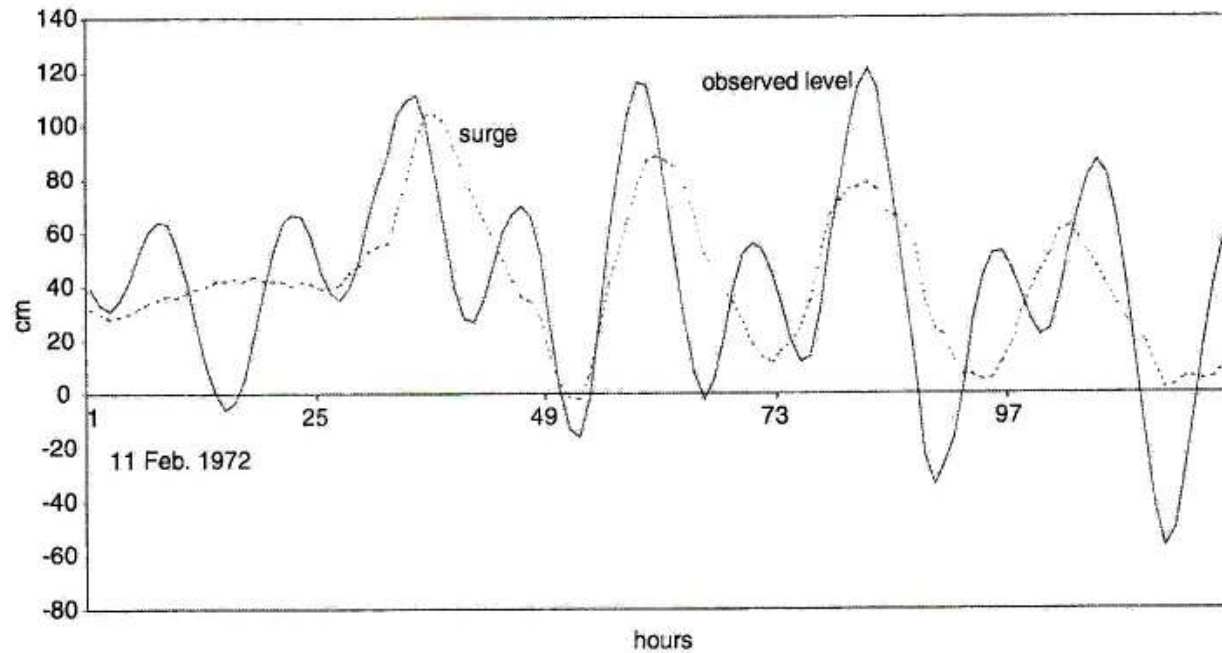
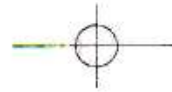


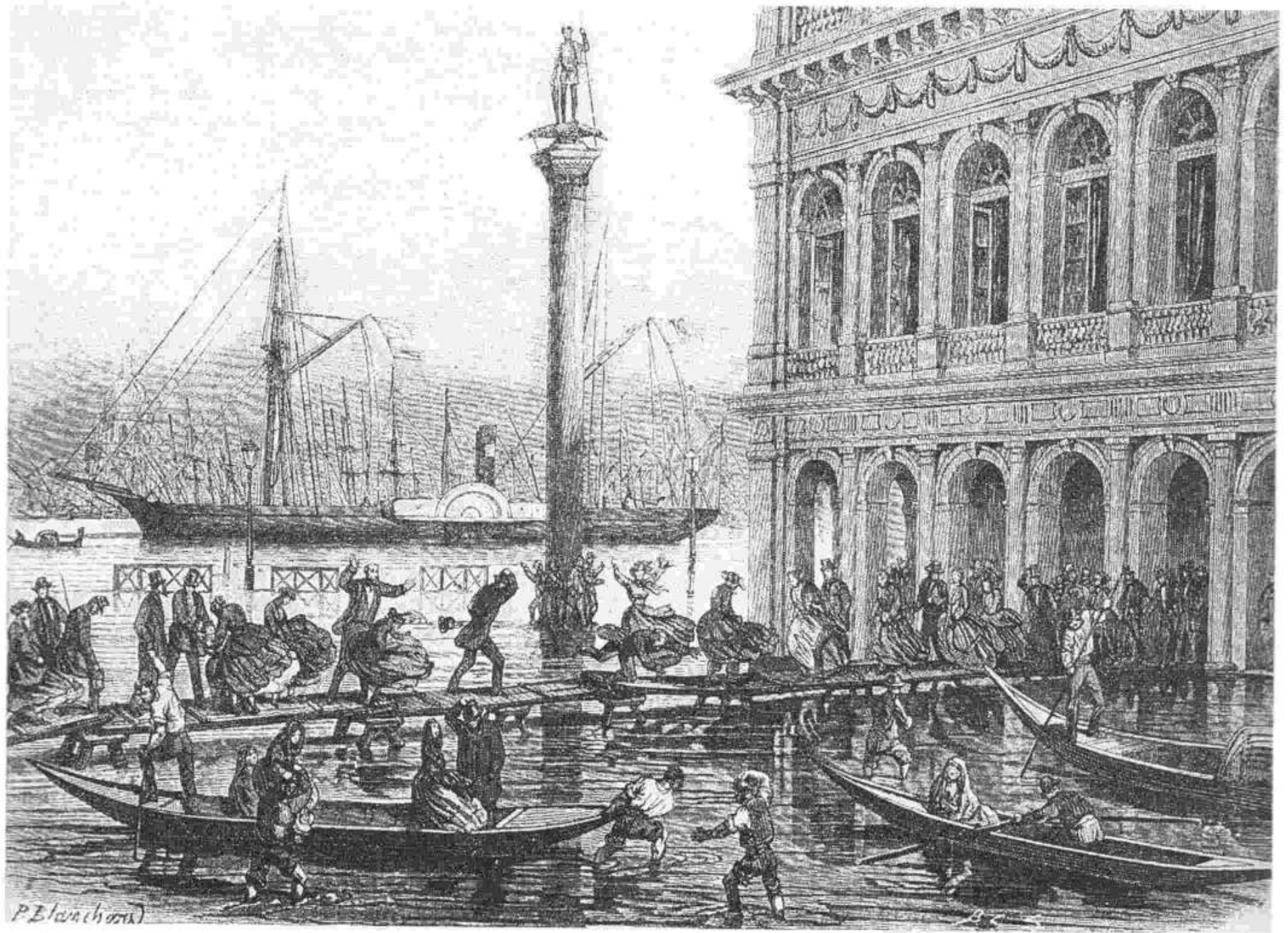
Fig. 9.2 Flooding in February 1972 showed the importance of seiches after a surge, with observed water levels higher in the days following the surge. Levels refer to the traditional local datum, mean sea level in 1897.

Venice Lagoon

Venice

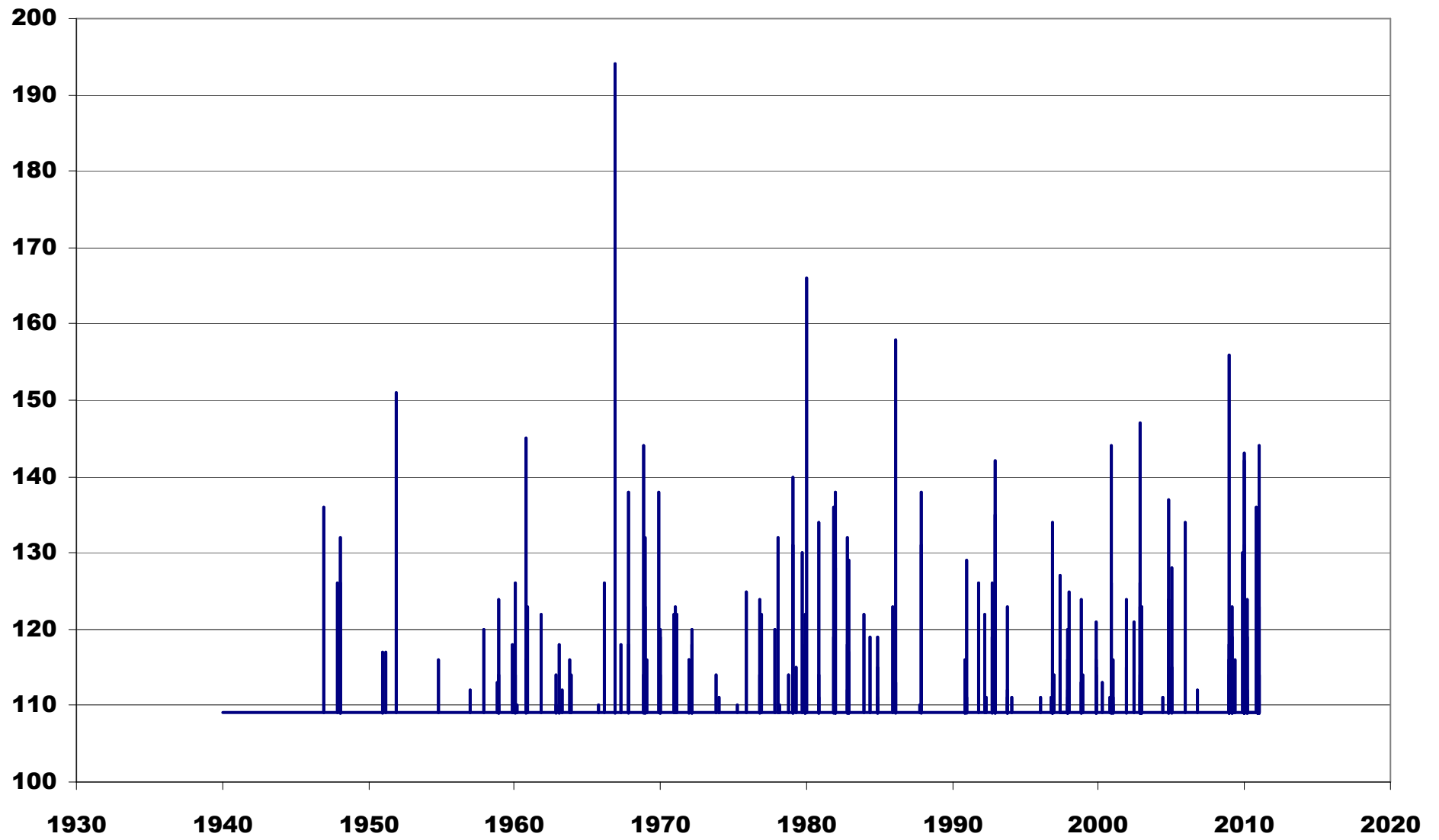
We are Here



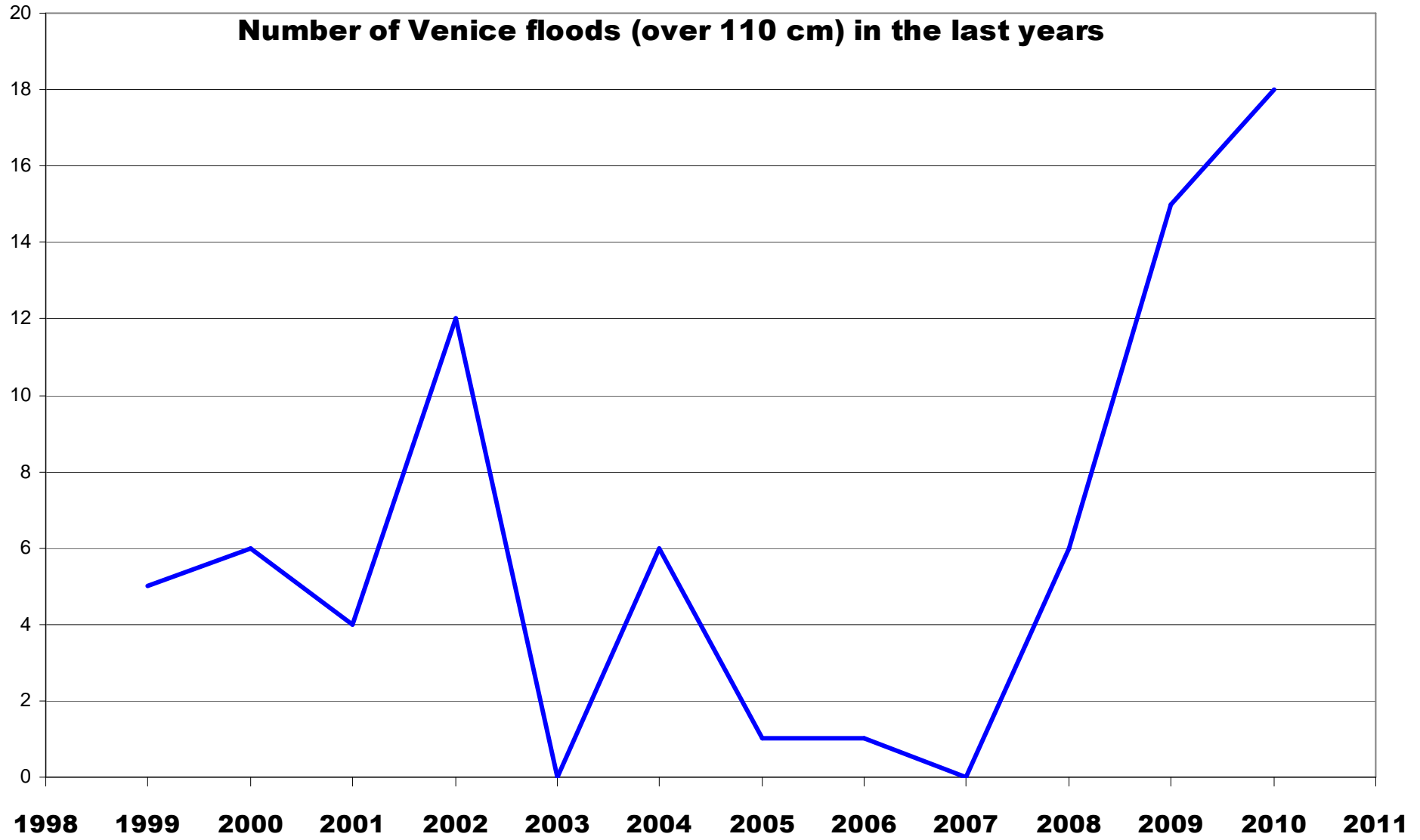


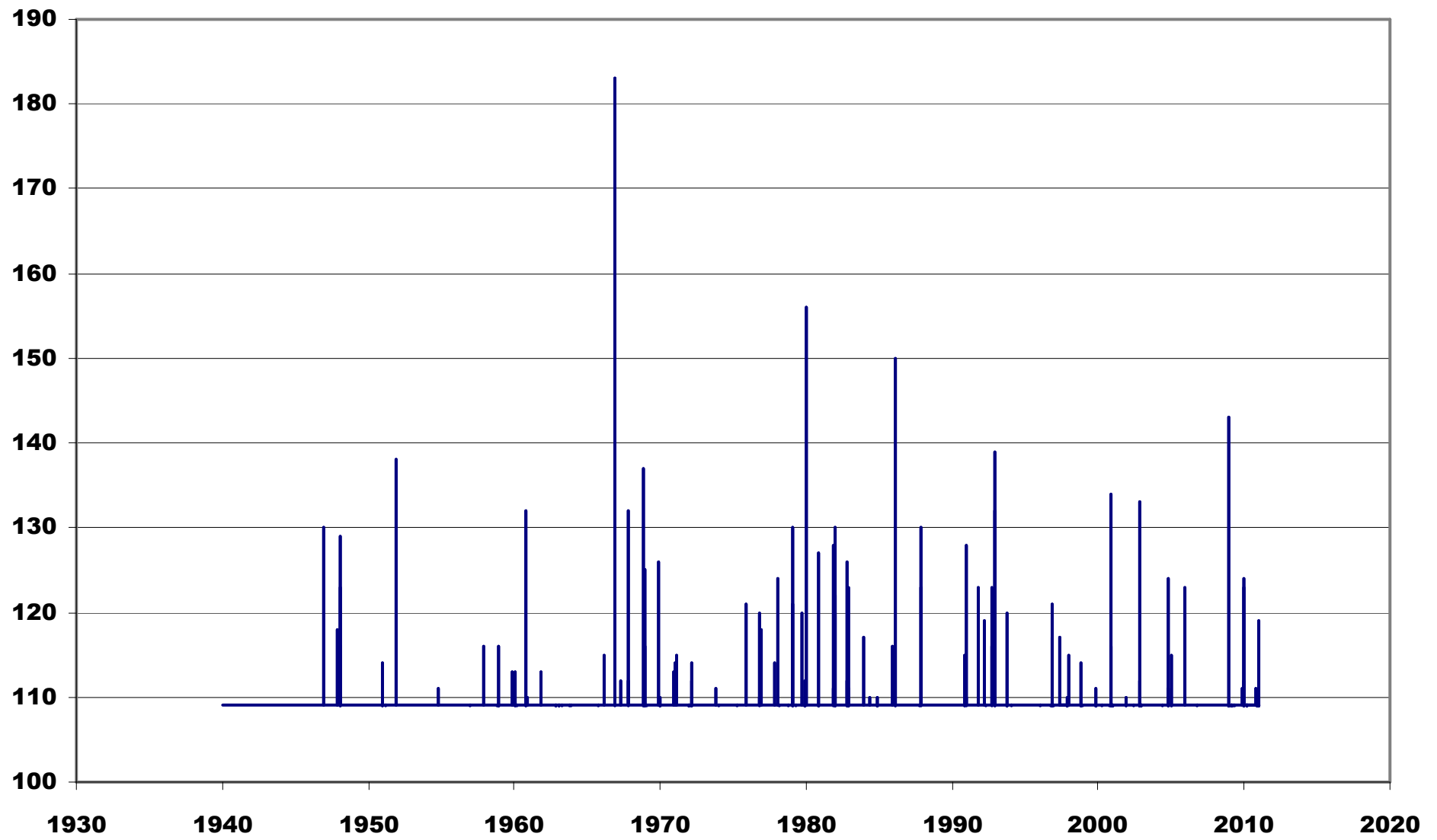
P. Blanchard

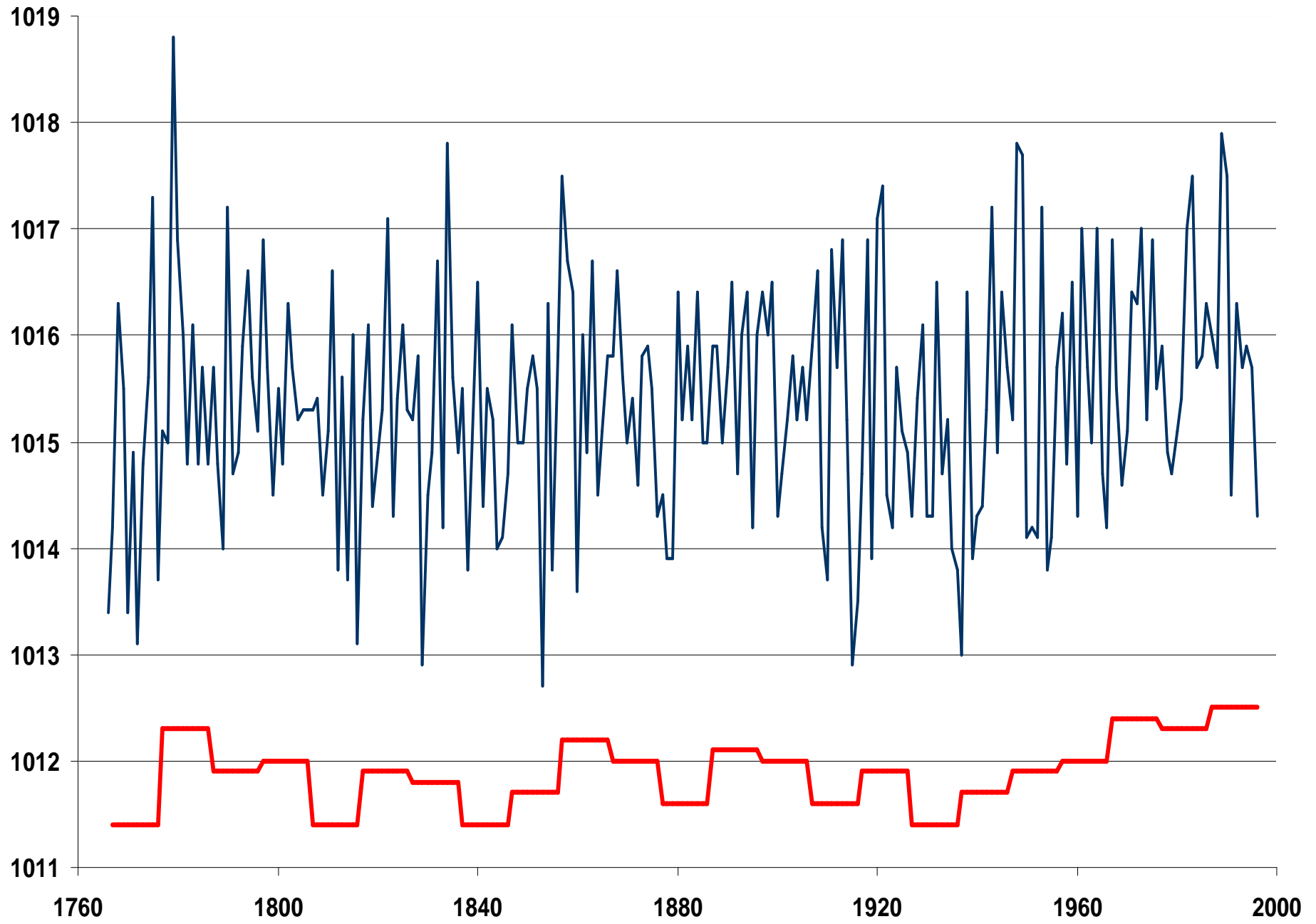




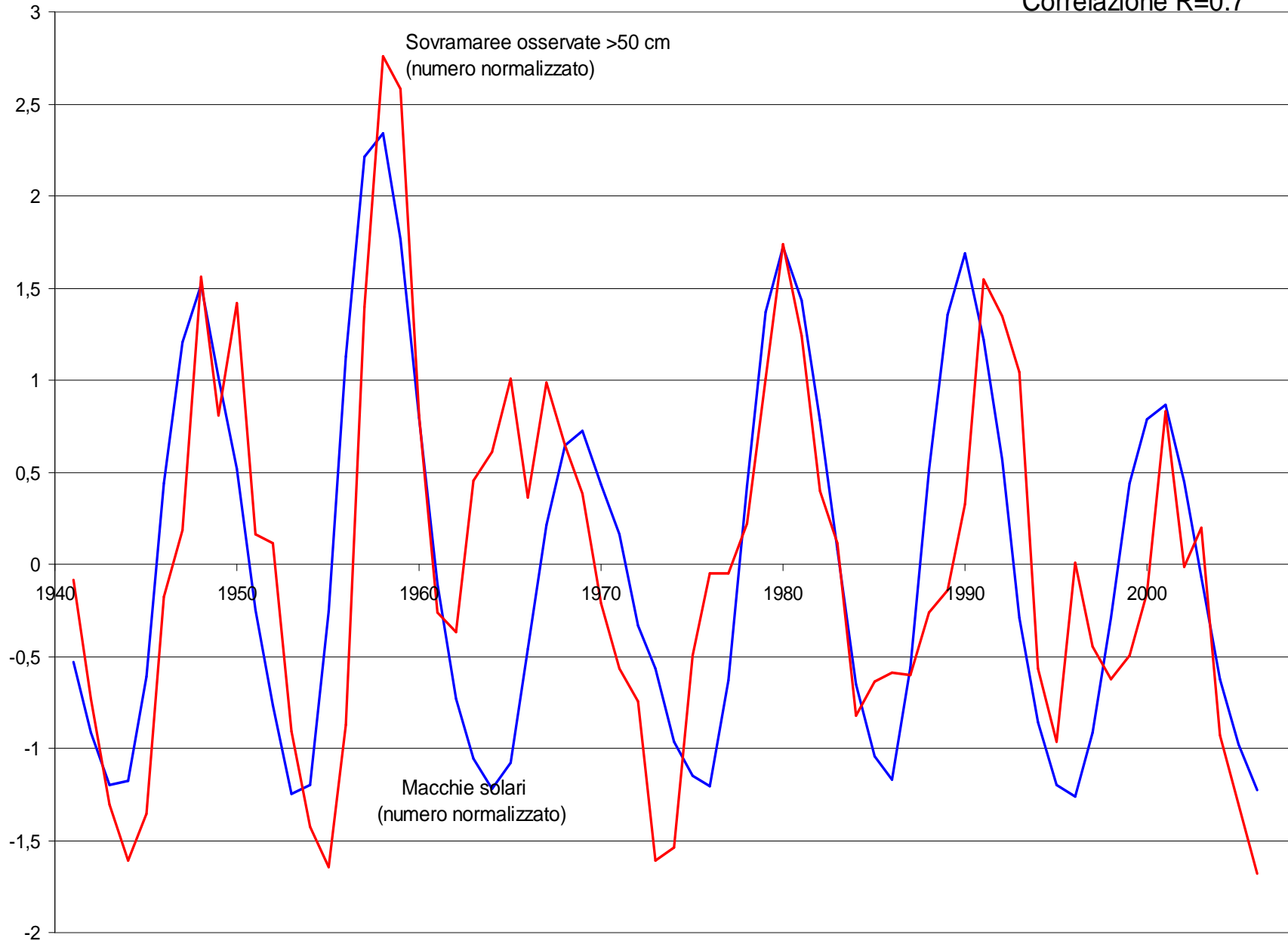
Number of Venice floods (over 110 cm) in the last years

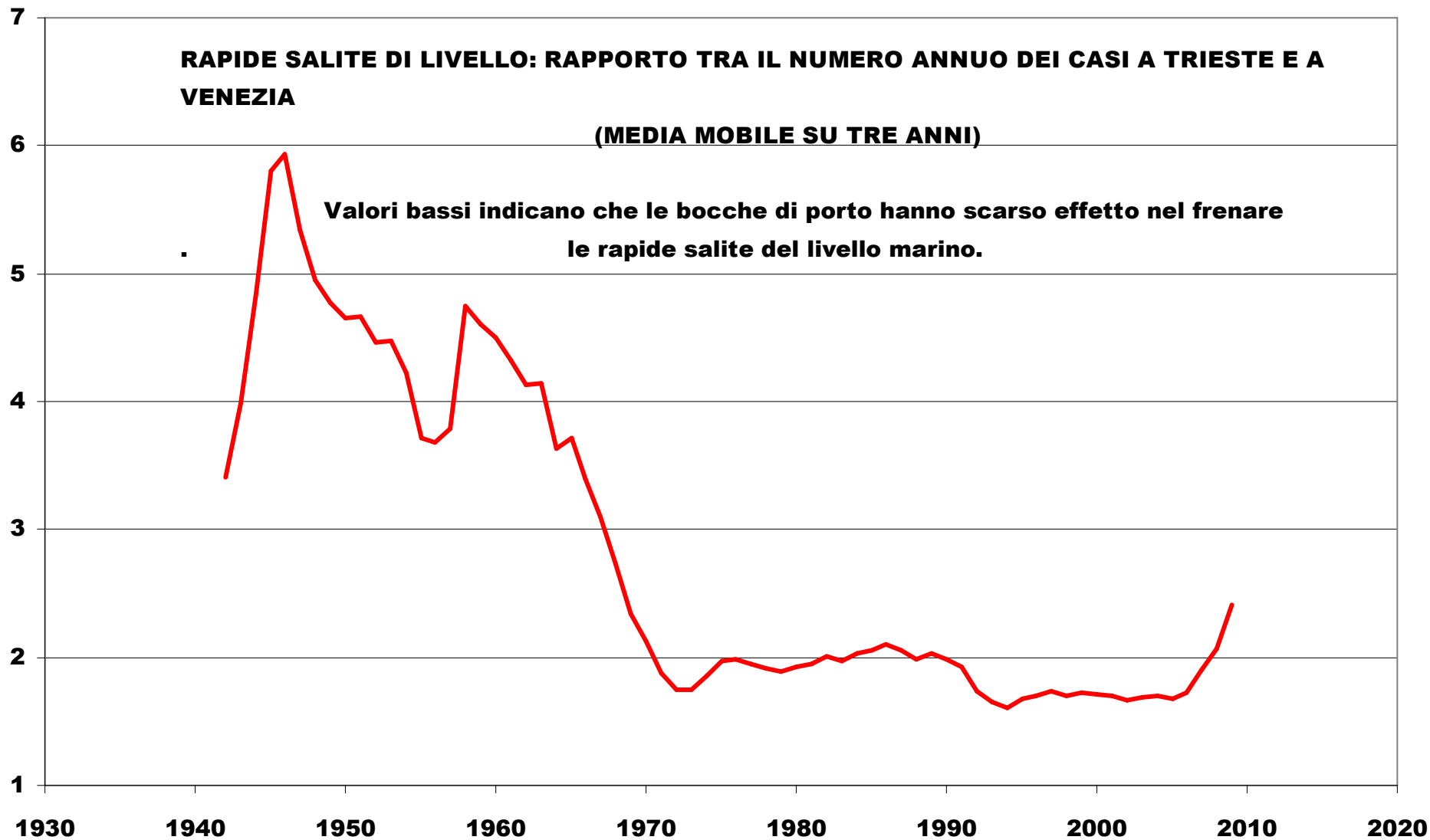


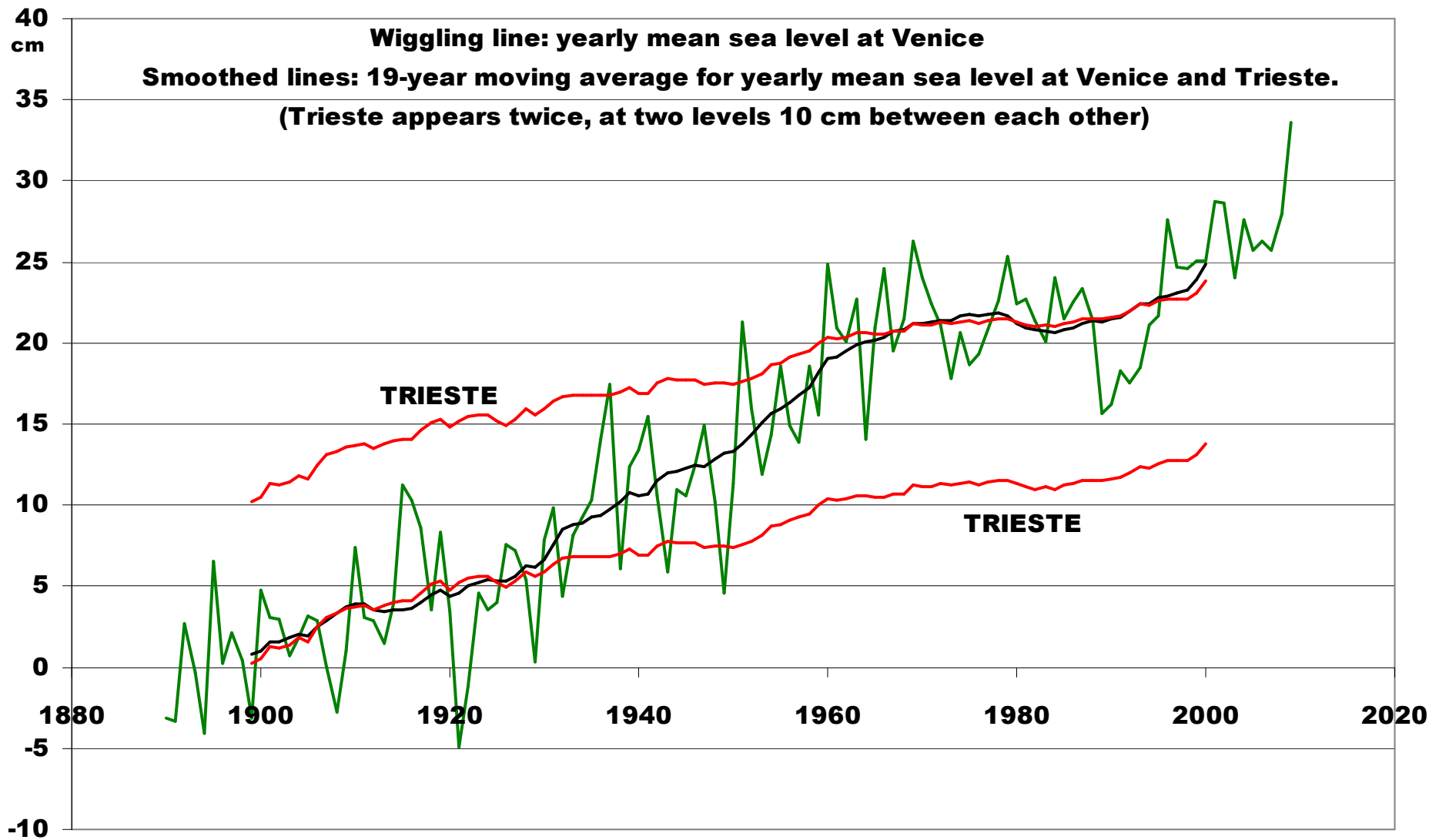




Correlazione R=0.7



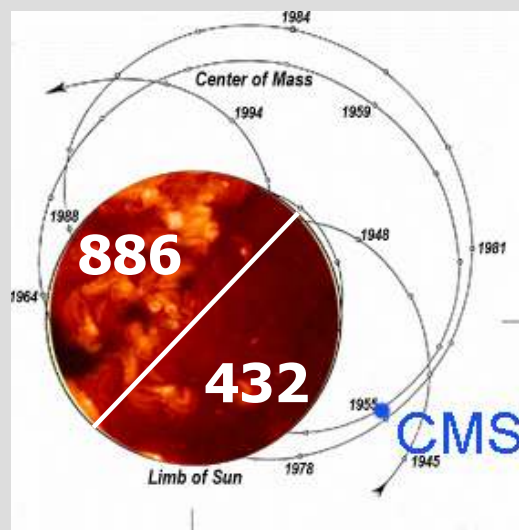




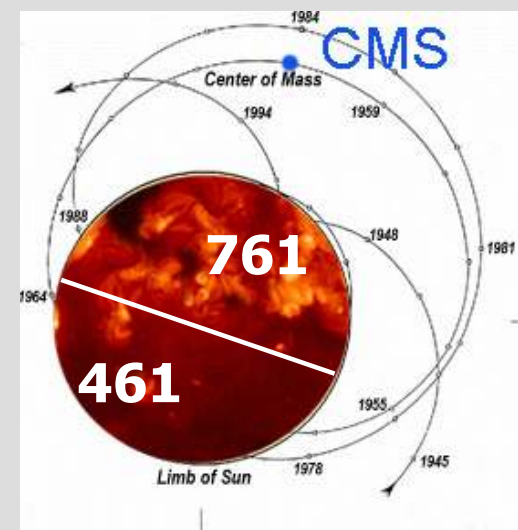
RAGGI COSMICI, FLARES E MOMENTO TORCENTE

DA **LANDSCHEIDT, 1988:**

- LE COSTELLAZIONI SOLE-CM-GIOVE SONO CONNESSI AD EPISODI DI FLARES ED EMISSIONI DI RAGGI COSMICI SOLARI, IN PARTICOLARE DI RAGGI X ENERGETICI
- LA DISTRIBUZIONE SPAZIALE DEI FLARES SOLARI MOSTRA UNA DISTRIBUZIONE GEOMETRICA UNILATERALE IN ACCORDO CON EVENTI S-CM-G(c) E S-CM-G(g)
- TALE DISTRIBUZIONE SEMBRA INVECE NON CORRELATA CON LA ROTAZIONE DEL SOLE SUL PROPRIO ASSE!



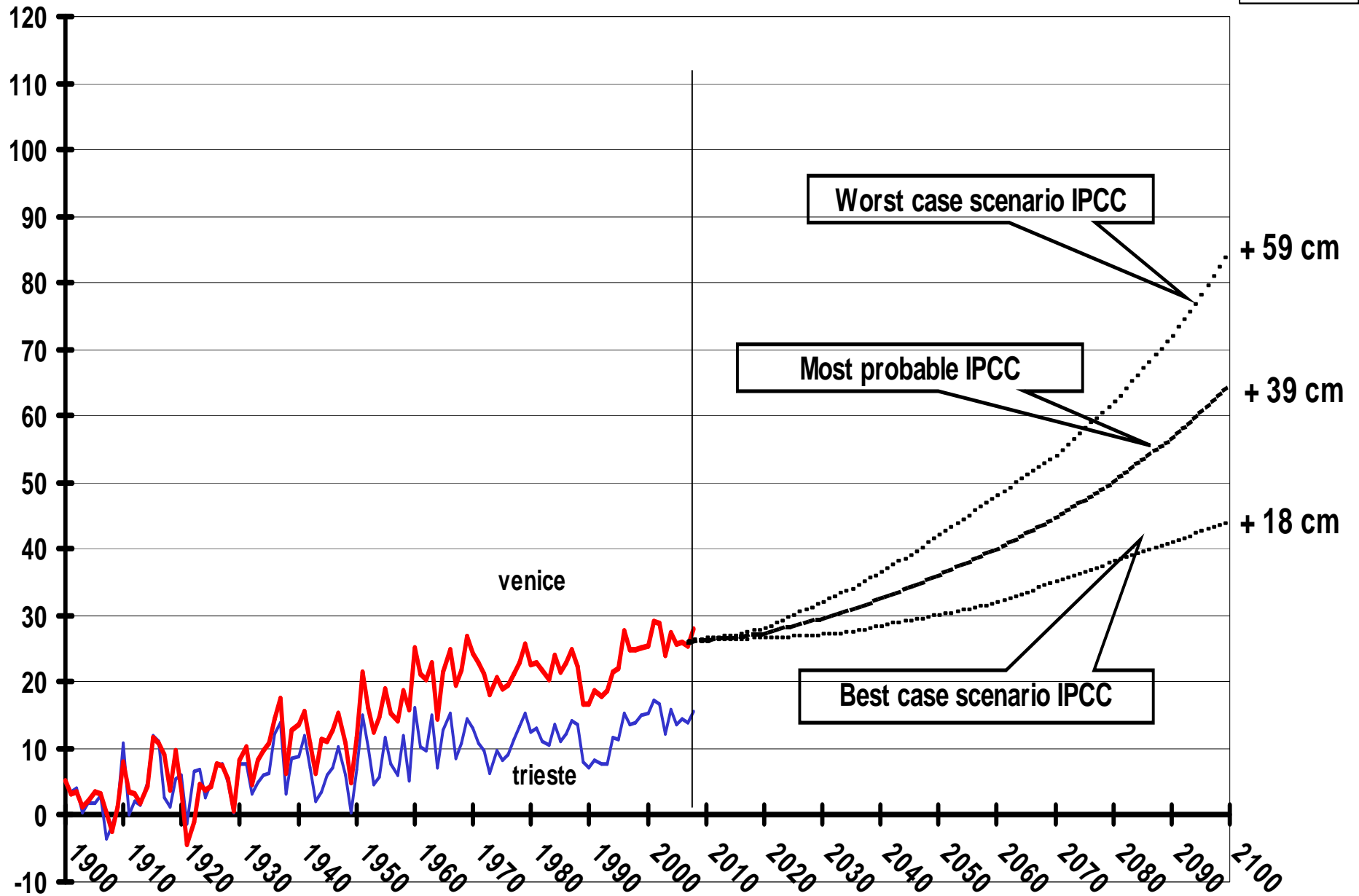
1955: EVENTO S-CM-G(c)
1951-1956: 1318 flares



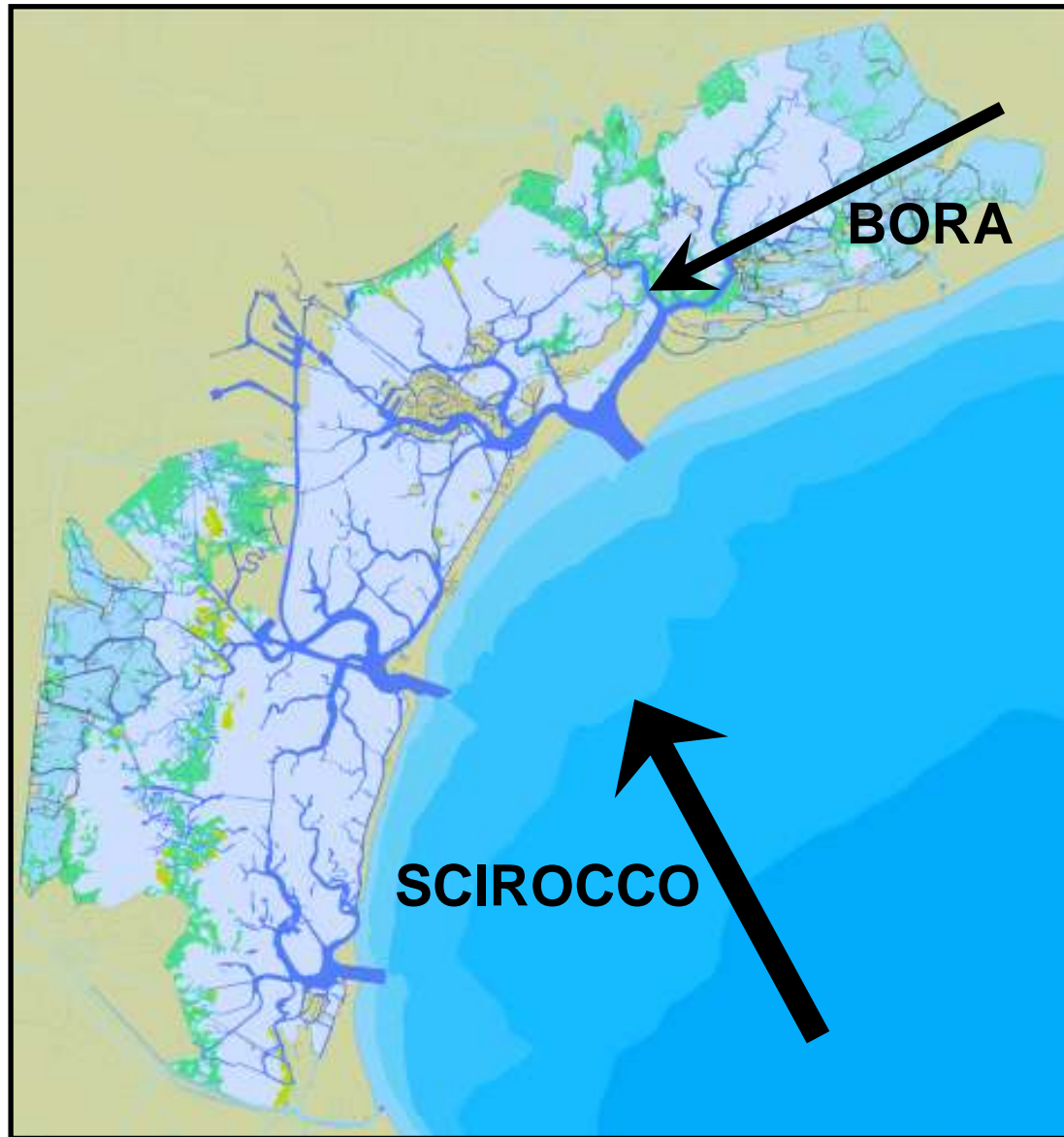
1960: EVENTO S-CM-G(g)
1960-1963: 1247 flares

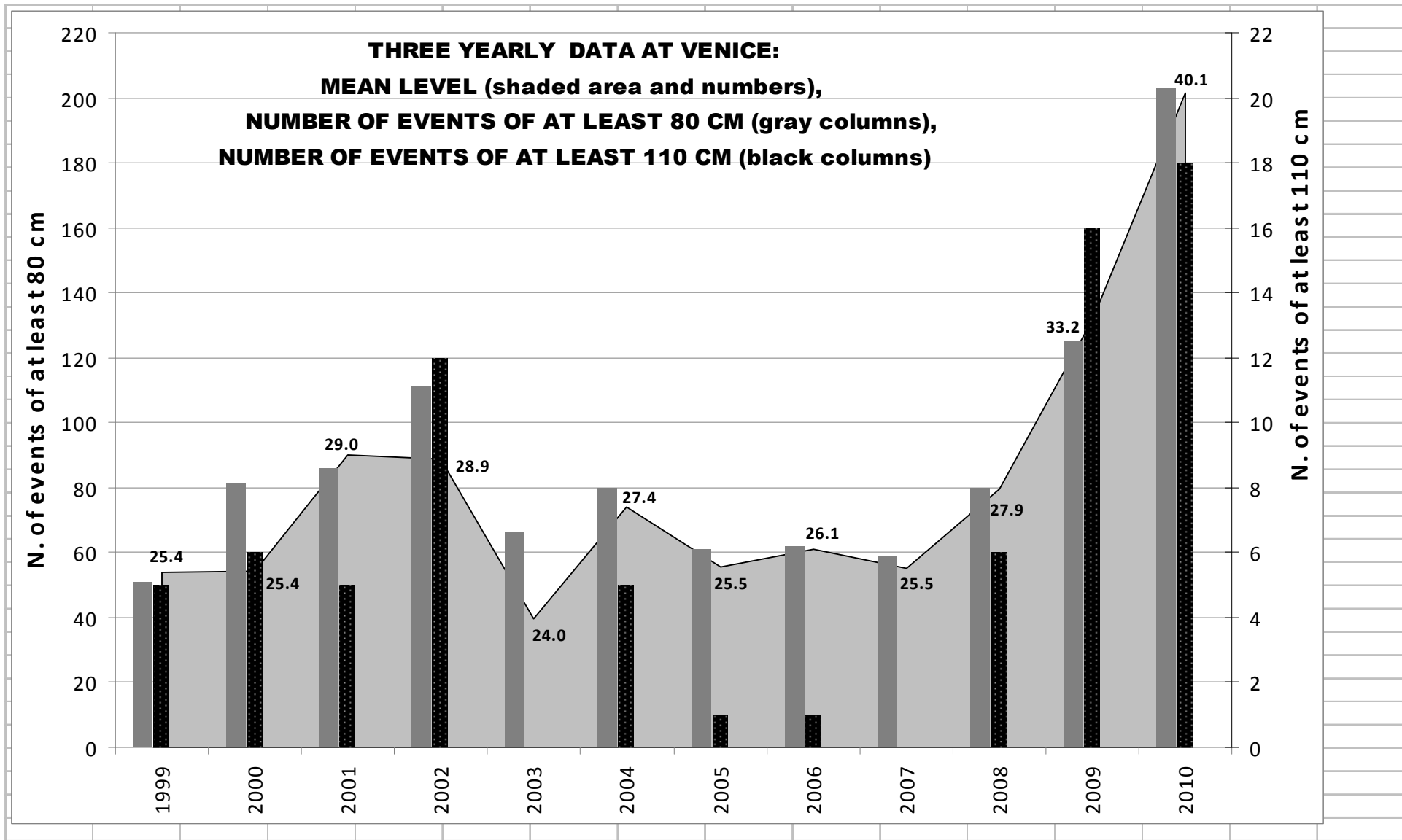
Mean Sea Level in different Scenarios (IPCC 2007)

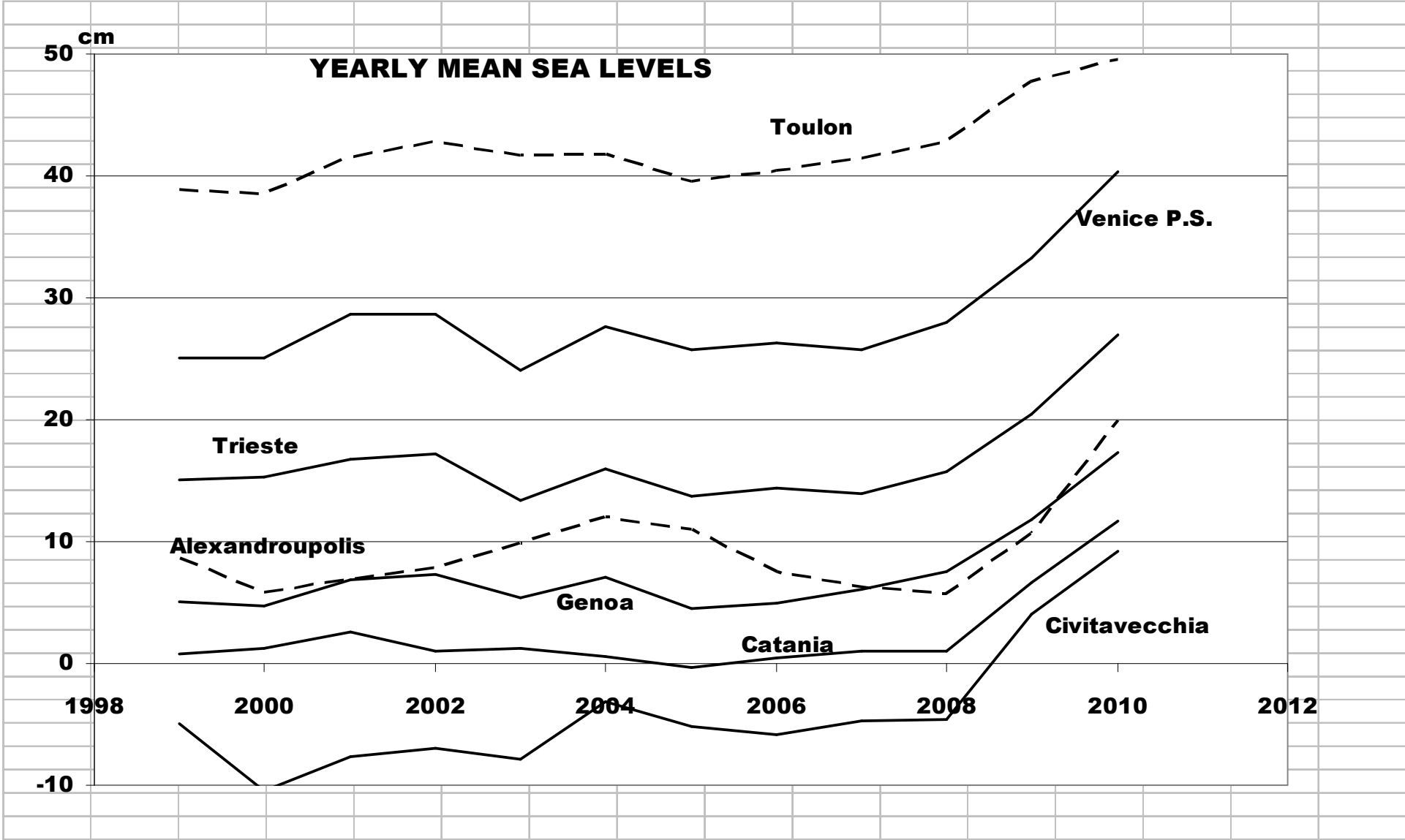
Future scenes

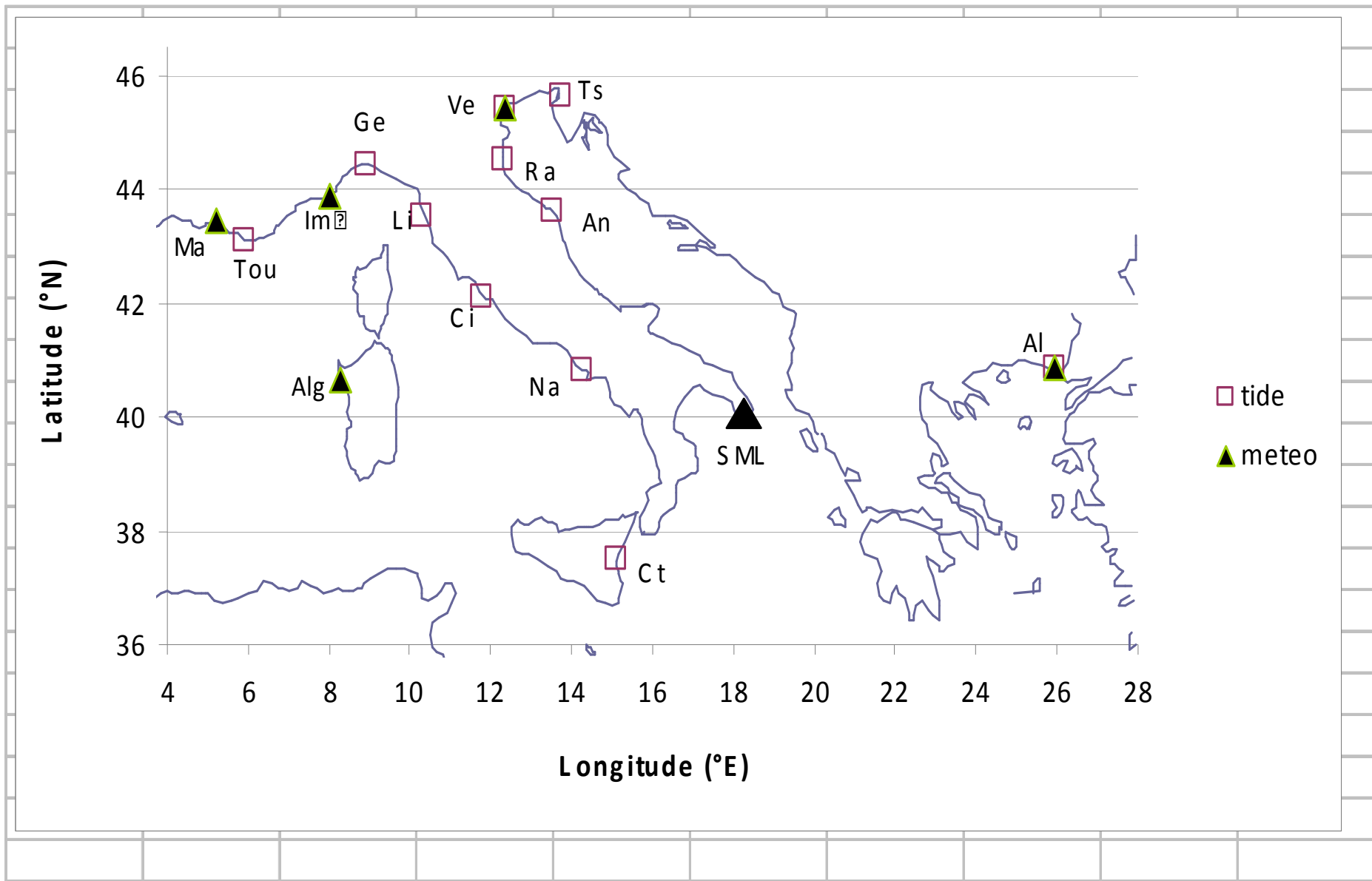


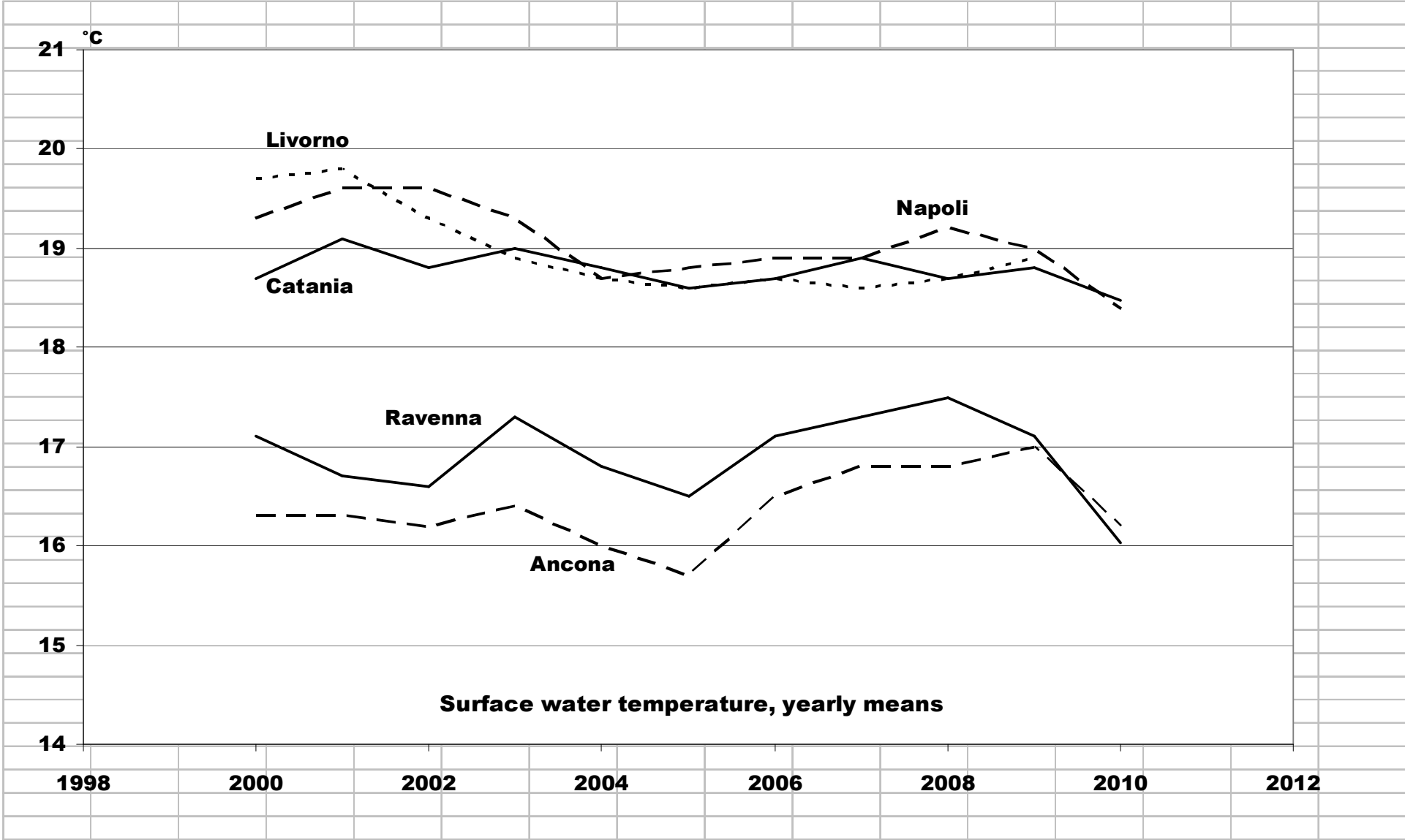


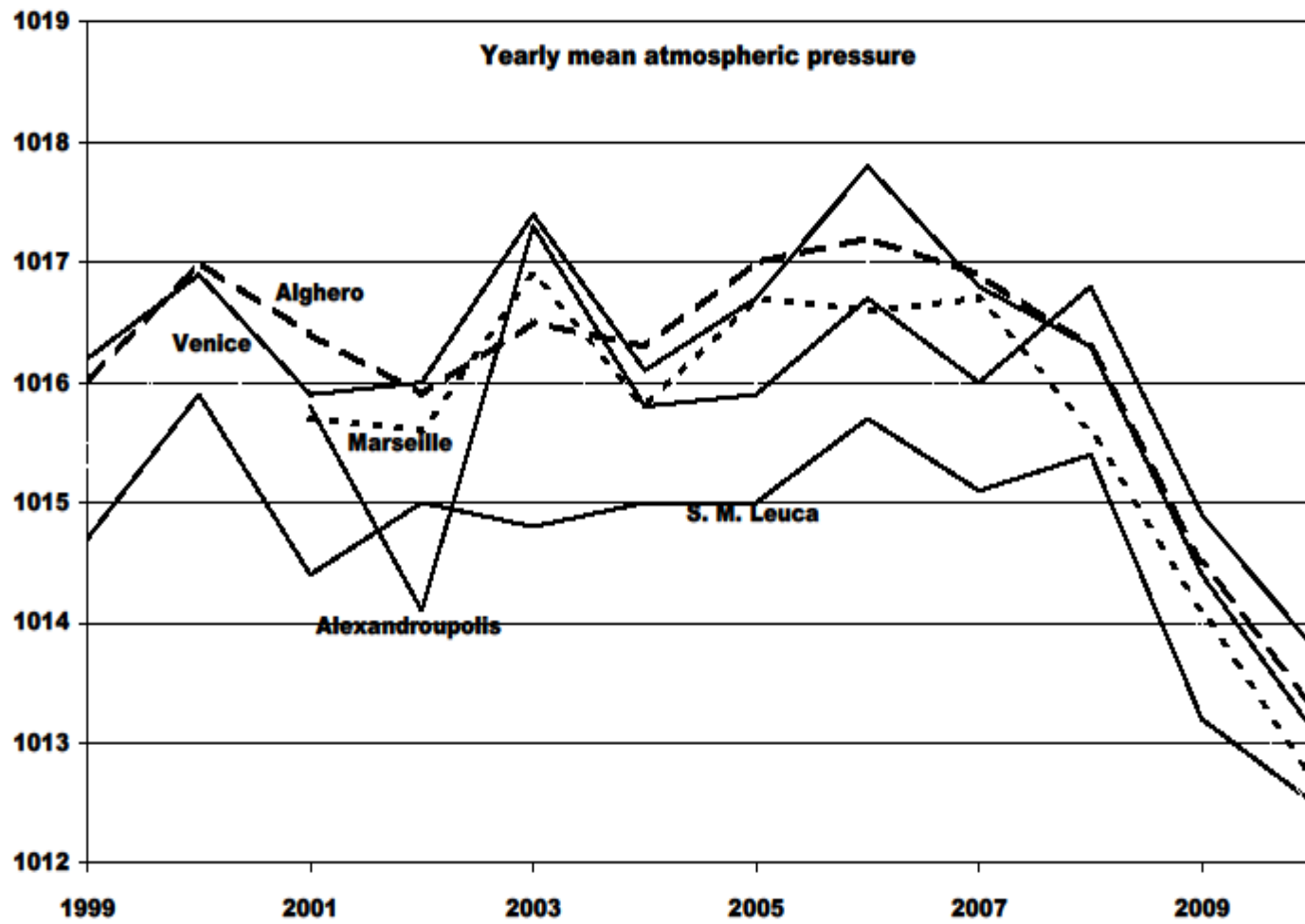


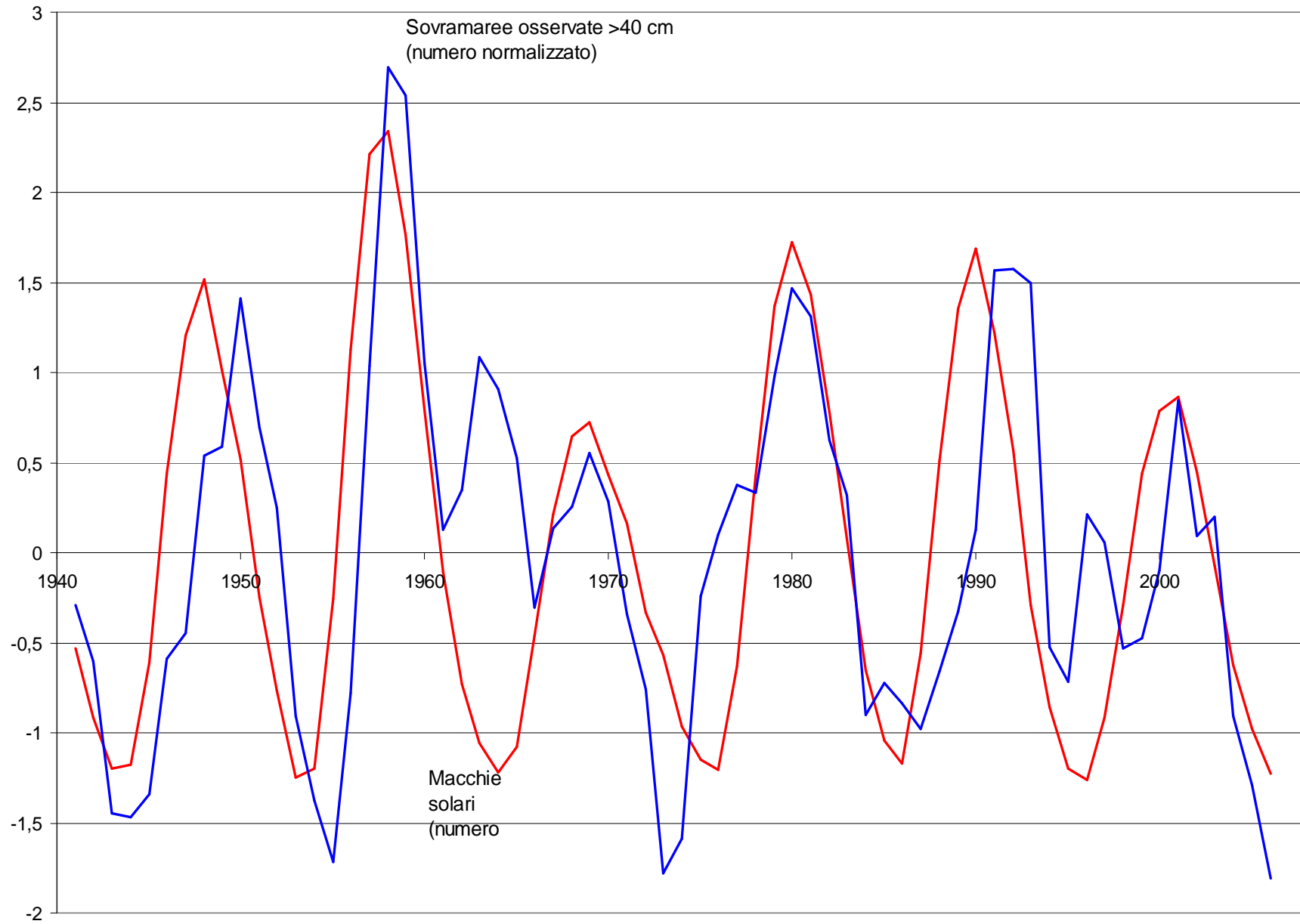




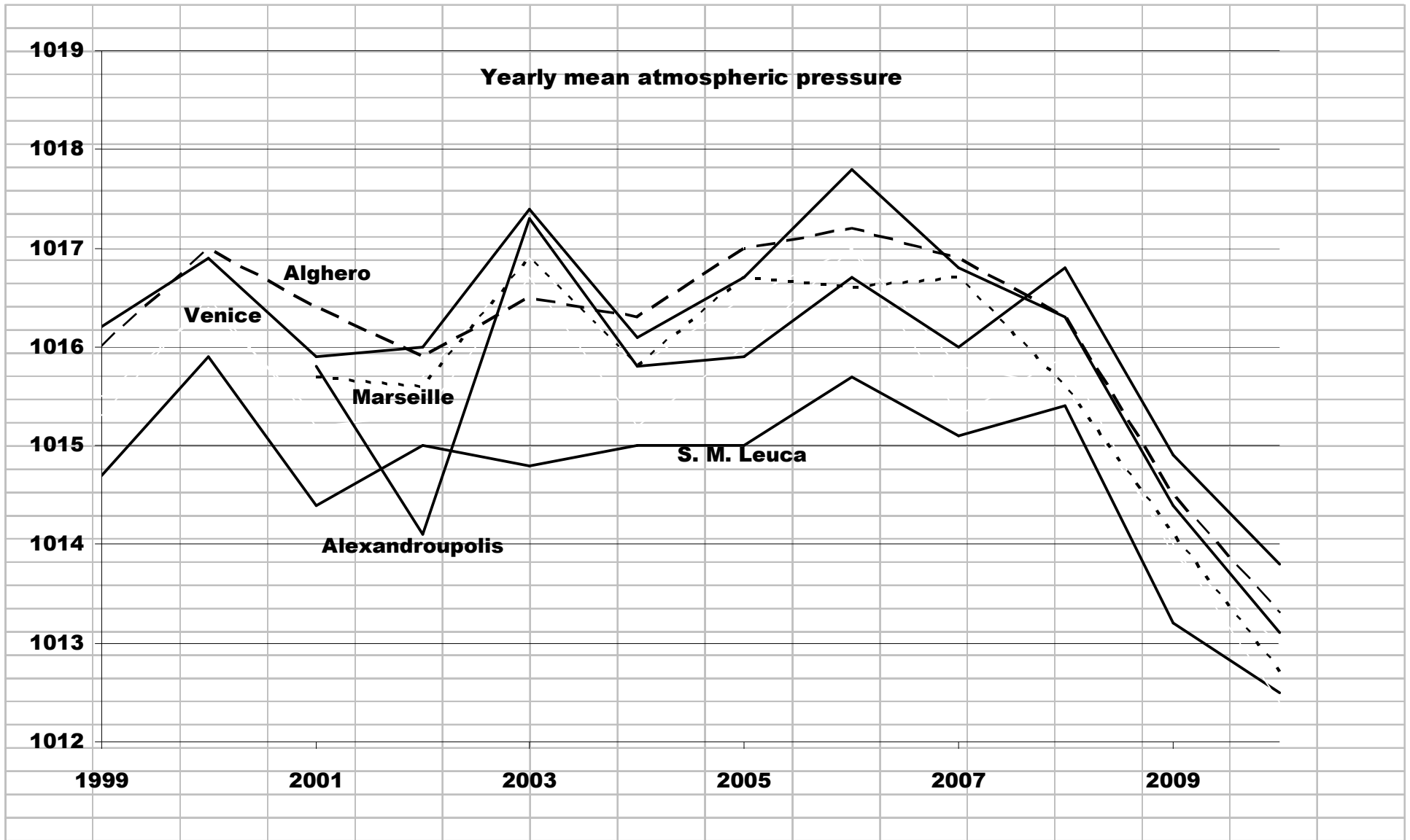


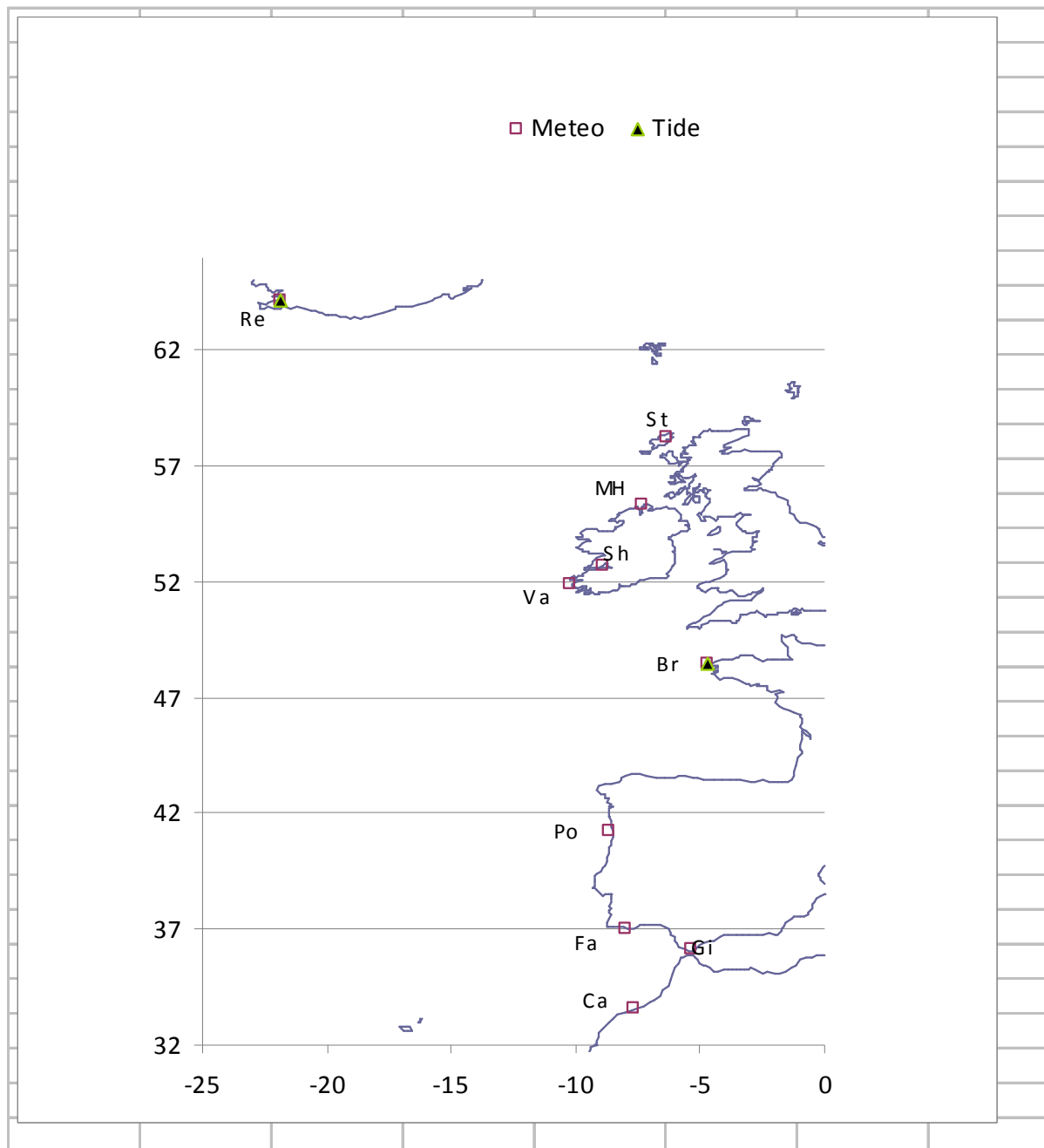


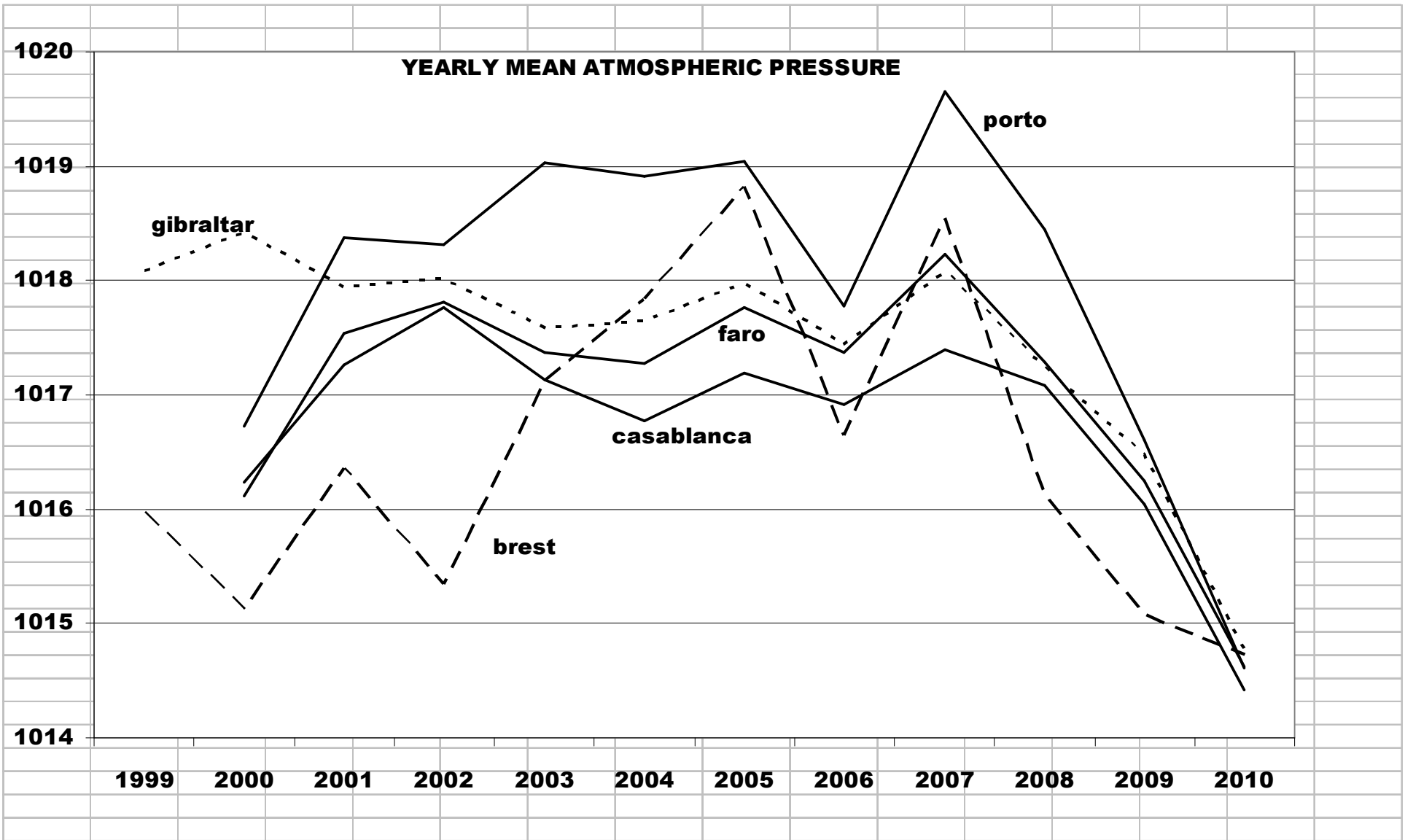




Yearly mean atmospheric pressure







YEARLY MEAN ATMOSPHERIC PRESSURE

hPa

