

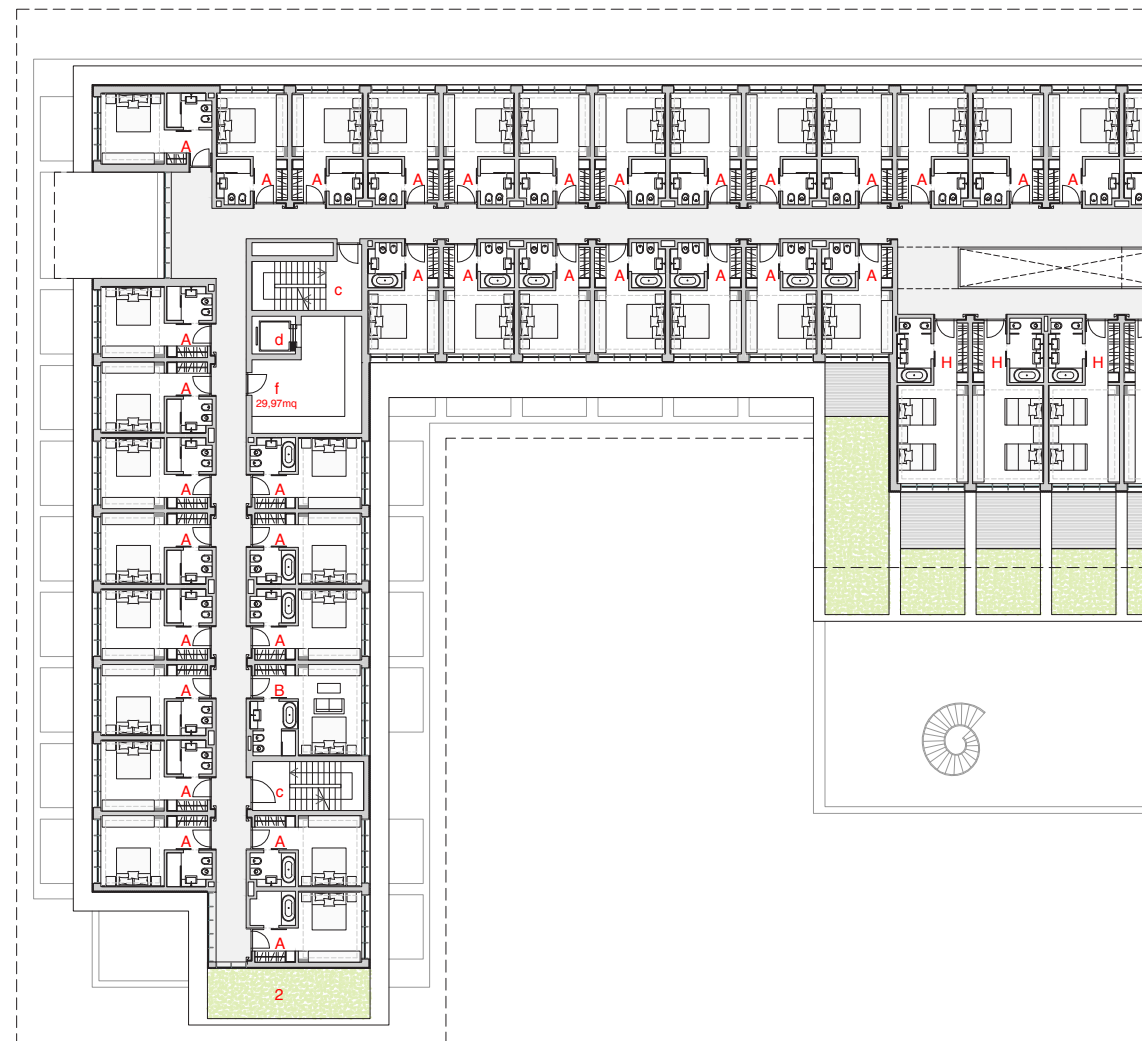
# Piano secondo

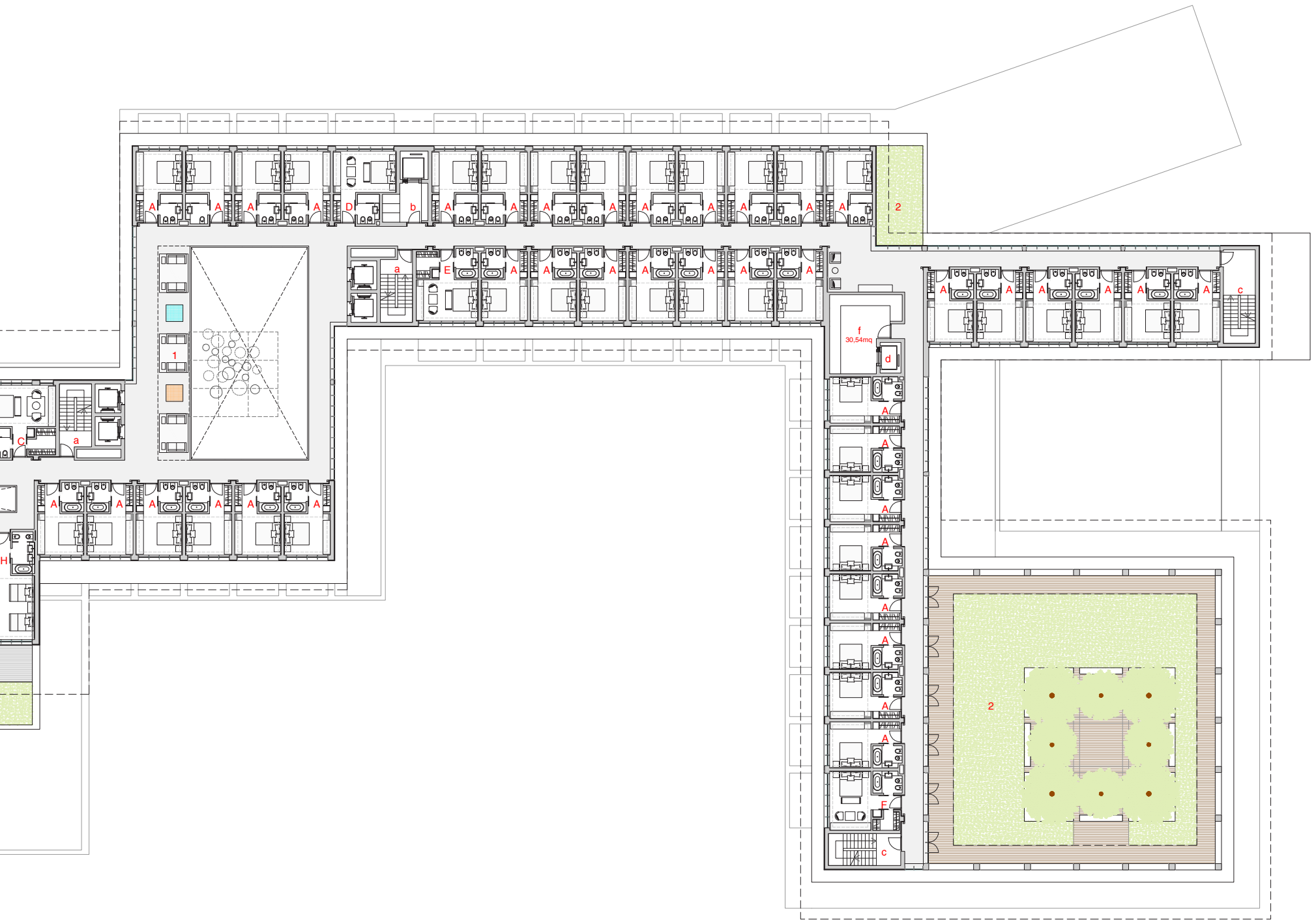
## L'hotel

camere tipo A /	n. 73	(21,00 mq)
camere tipo B	n. 1	(27,10 mq)
camere tipo C	n. 1	(30,15 mq)
camere tipo D	n. 1	(25,55 mq)
camere tipo E	n. 1	(27,70 mq)
camere tipo F	n. 1	(26,45 mq)
camere tipo H	n. 4	(31,55 mq)

1. aree soggiorni
2. terrazze verdi

- a. scala e ascensori per ospiti
- b. ascensore di servizio
- c. scala di servizio
- d. montacarichi di servizio
- f. servizi di piano





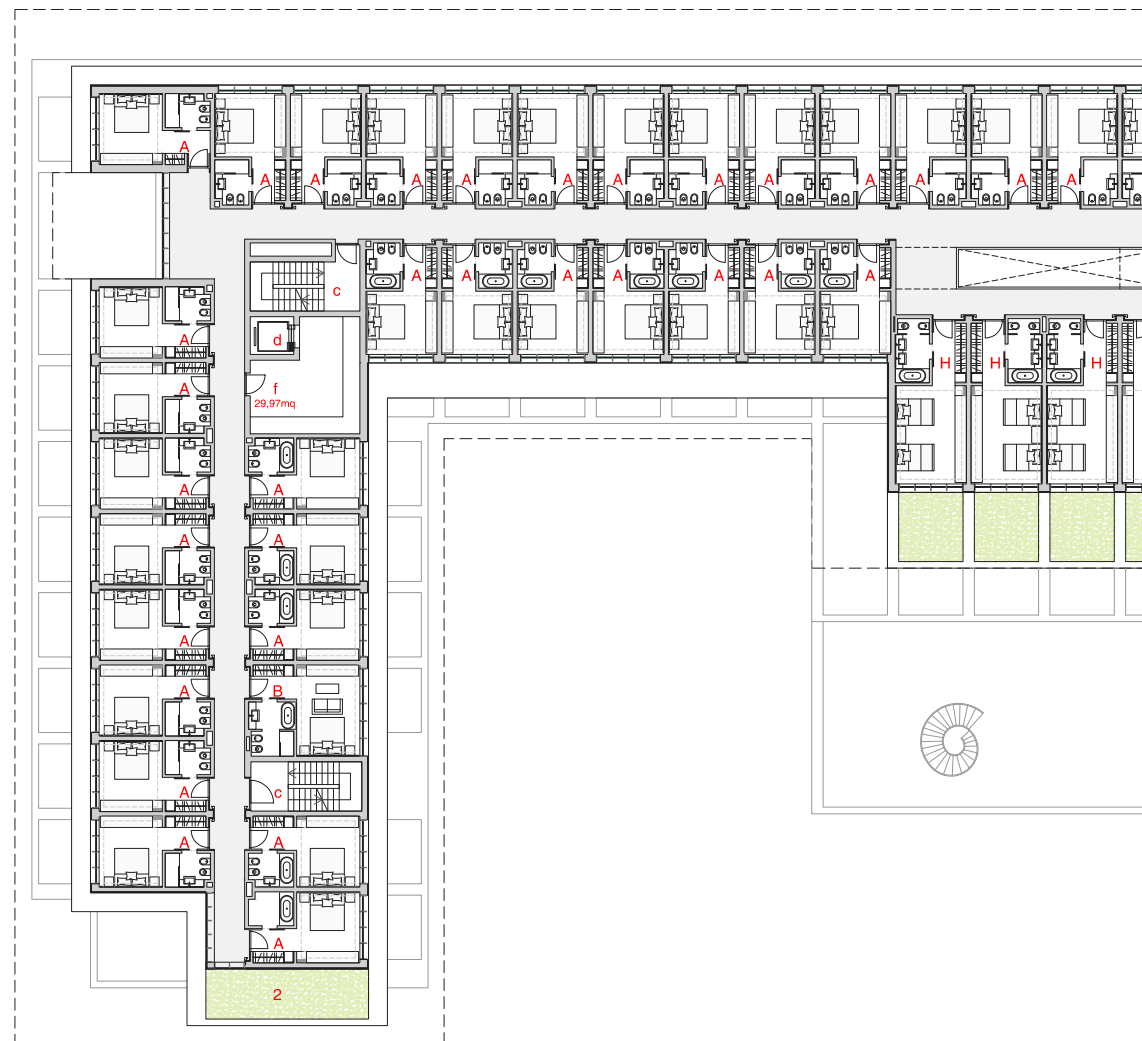
# Piano terzo

## L'hotel

camere tipo A /	n. 73	(21,00 mq)
camere tipo B	n. 1	(27,10 mq)
camere tipo C	n. 1	(30,15 mq)
camere tipo D	n. 1	(25,55 mq)
camere tipo E	n. 1	(27,70 mq)
camere tipo F	n. 1	(26,45 mq)
camere tipo H	n. 4	(31,55 mq)

1. aree soggiorni
2. terrazze verdi

- a. scala e ascensori per ospiti
- b. ascensore di servizio
- c. scala di servizio
- d. montacarichi di servizio
- f. servizi di piano





# Piano quarto

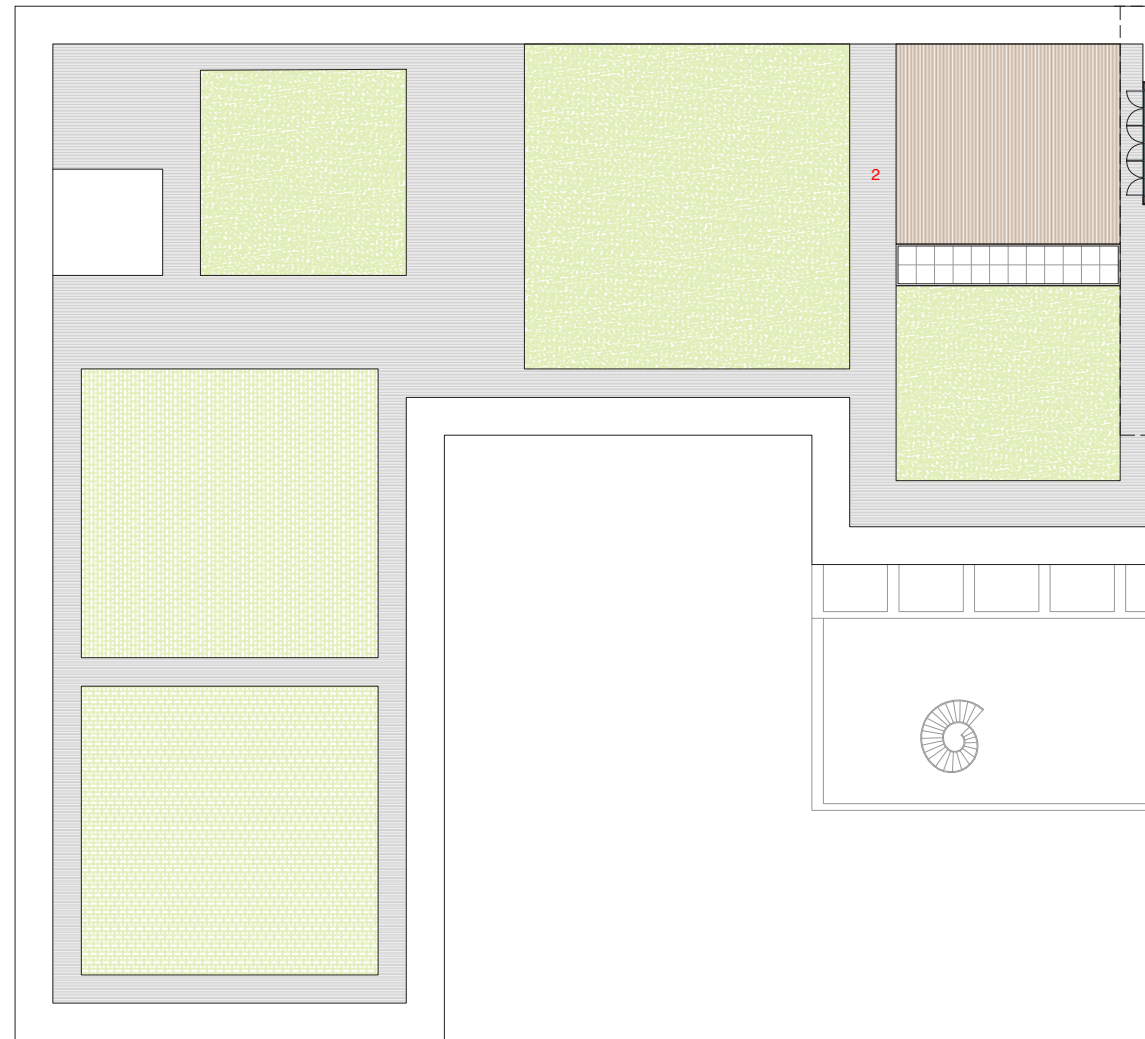
## L'hotel

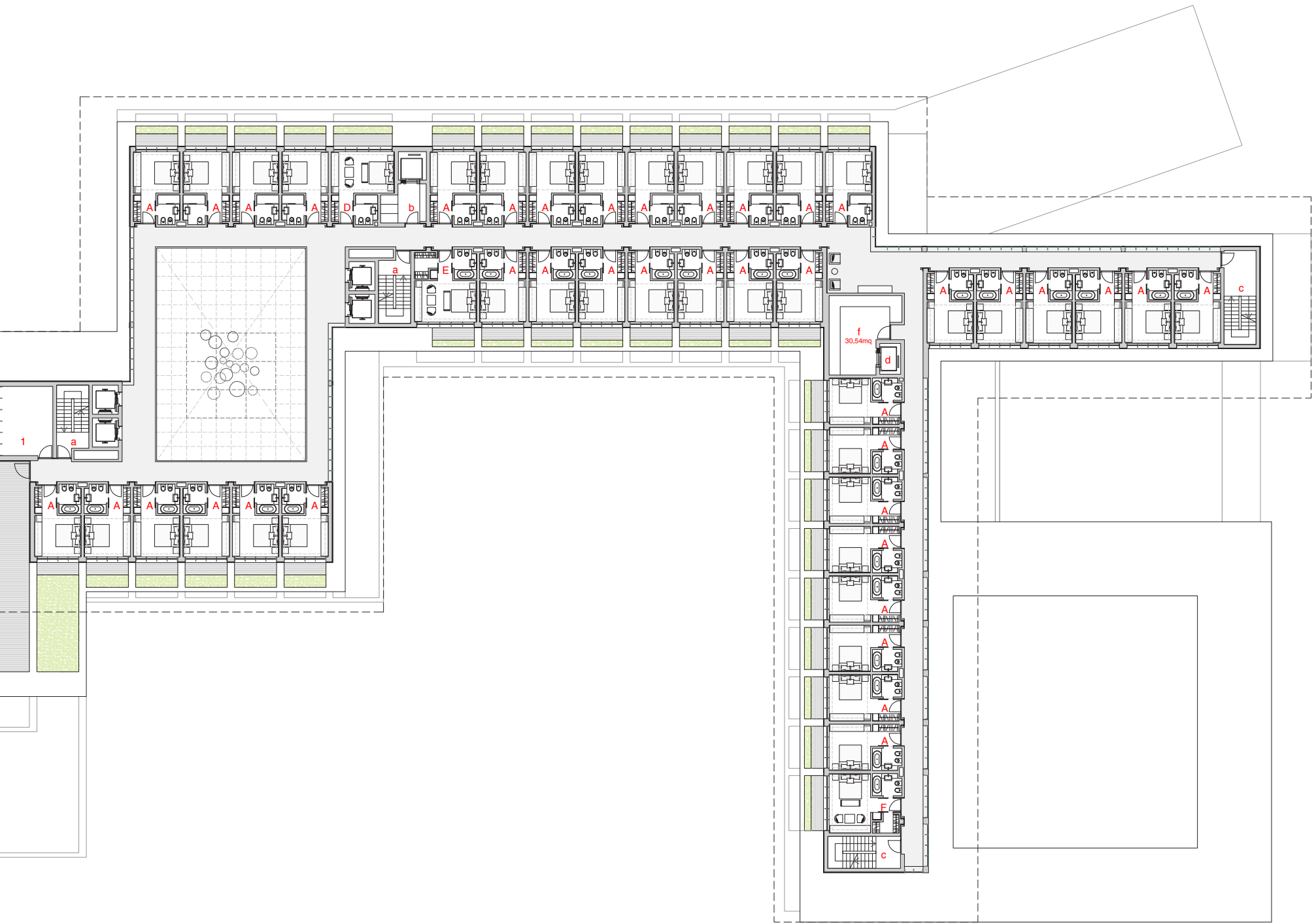
---

camere tipo A	n. 40	(21,00 mq)
camere tipo D	n. 1	(25,55 mq)
camere tipo E	n. 1	(27,70 mq)
camere tipo F	n. 1	(26,45 mq)

1. deposito terrazza
2. terrazze verdi

- 
- a. scala e ascensori per ospiti
  - b. ascensore di servizio
  - c. scala di servizio
  - d. montacarichi di servizio
  - f. servizi di piano





# Tipologie di camere

## L'hotel

### Piano 1

Camera tipo A - 21 mq -	59 camere
Camera tipo B - 27,1 mq -	1 camera
Camera tipo C - 30,15 -	1 camera
Camera tipo D - 25,55 mq -	1 camera
Camera tipo E - 27,7 mq -	1 camera
Camera tipo F - 26,45 mq -	1 camera
Camera tipo G - 27,95 mq -	13 camere

**Piano 1 - 77 camere**

### Piano 2

Camera tipo A - 21 mq -	73 camere
Camera tipo B - 27,1 mq -	1 camera
Camera tipo C - 30,15 -	1 camera
Camera tipo D - 25,55 mq -	1 camera
Camera tipo E - 27,7 mq -	1 camera
Camera tipo F - 26,45 mq -	1 camera
Camera tipo H - 31,55 mq -	4 camere

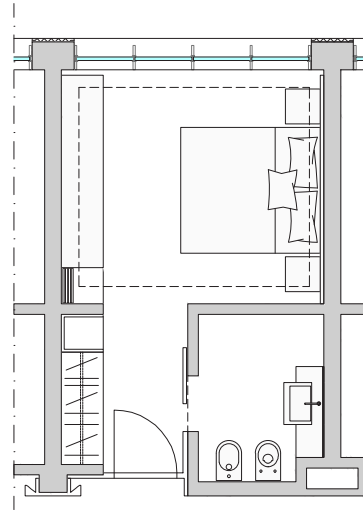
**Piano 2 - 82 camere**

### Piano 3

Camera tipo A - 21 mq -	40 camere
Camera tipo D - 25,55 mq -	1 camera
Camera tipo E - 27,7 mq -	1 camera
Camera tipo F - 26,45 mq -	1 camera

**Piano 3 - 43 camere**

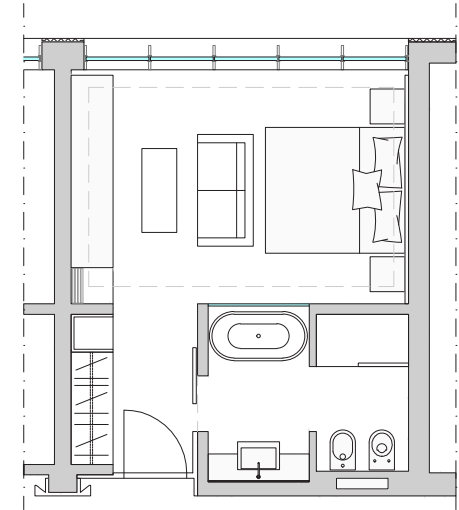
**Totale - 202 camere**



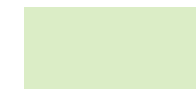
**Tipo A - 21 mq**



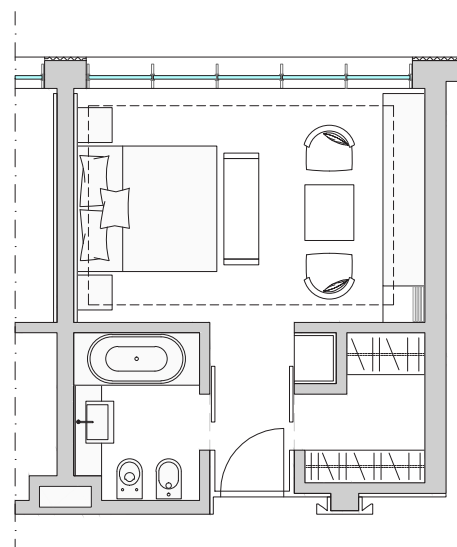
P1 - 59 camere  
P2 - 73 camere  
P3 - 40 camere



**Tipo B - 27,1 mq**



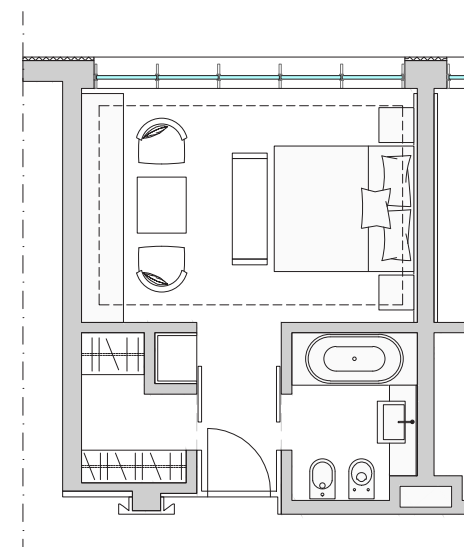
P1 - 1 camera  
P2 - 1 camera



**Tipo E - 27,7 mq**



P1 - 1 camera  
P2 - 1 camera  
P3 - 1 camera

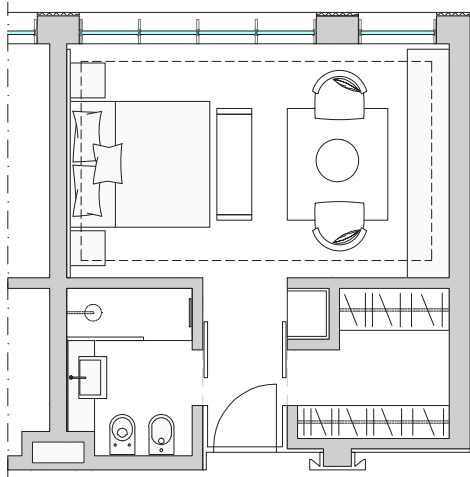


**Tipo F - 26,45 mq**



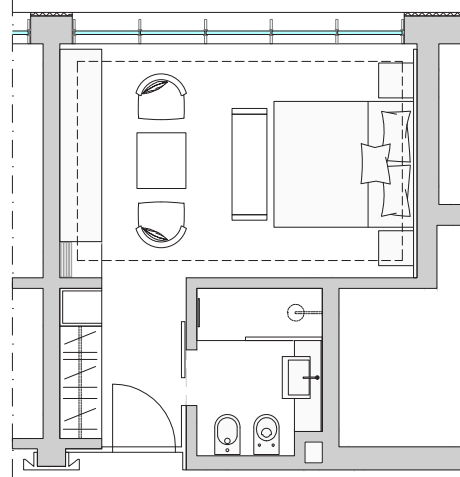
P1 - 1 camera  
P2 - 1 camera  
P3 - 1 camera





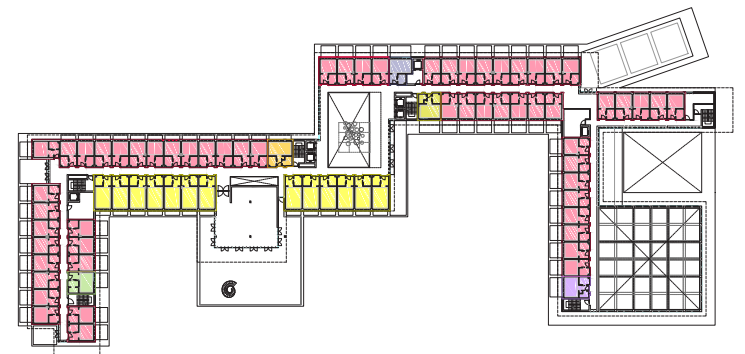
**Tipo C - 30,15 mq**

P1 - 1 camera  
P2 - 1 camera

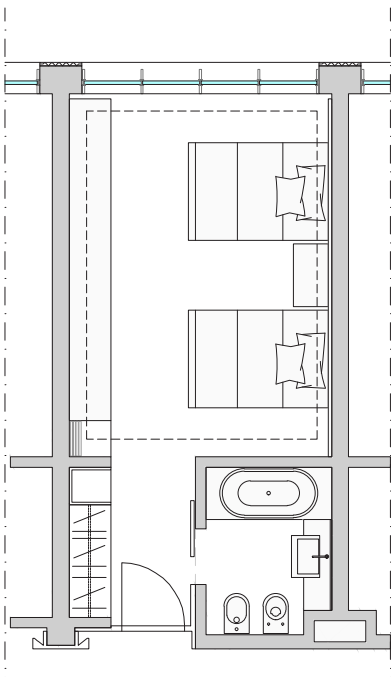


**Tipo D - 25,55 mq**

P1 - 1 camera  
P2 - 1 camera  
P3 - 1 camera

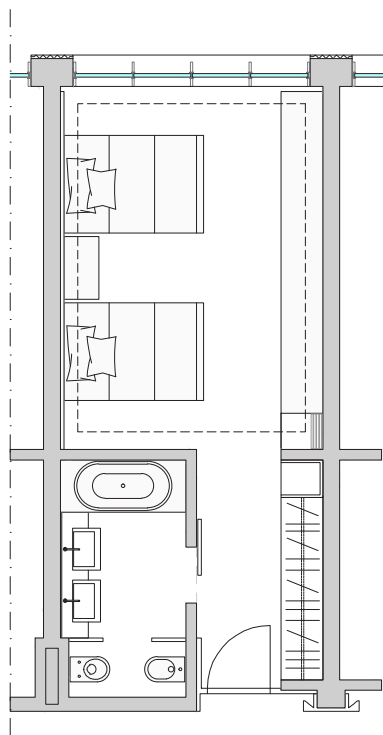


**Piano primo**



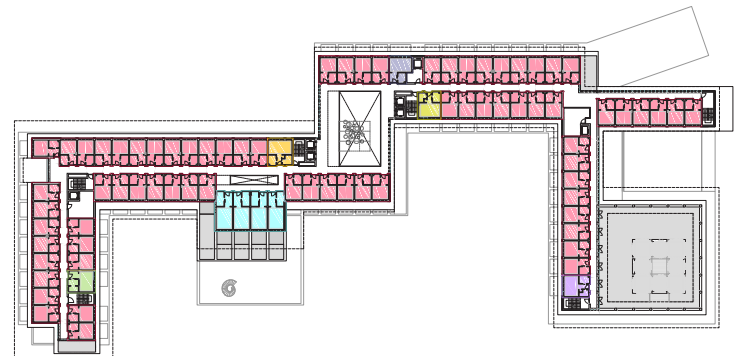
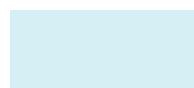
**Tipo G - 27,95 mq**

P1 - 13 camere

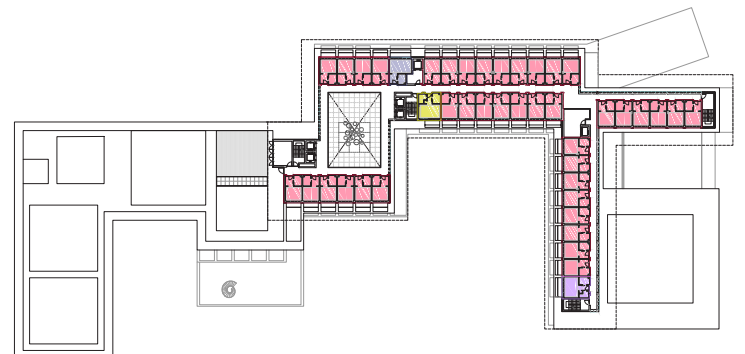


**Tipo H - 31,55 mq**

P2 - 4 camere



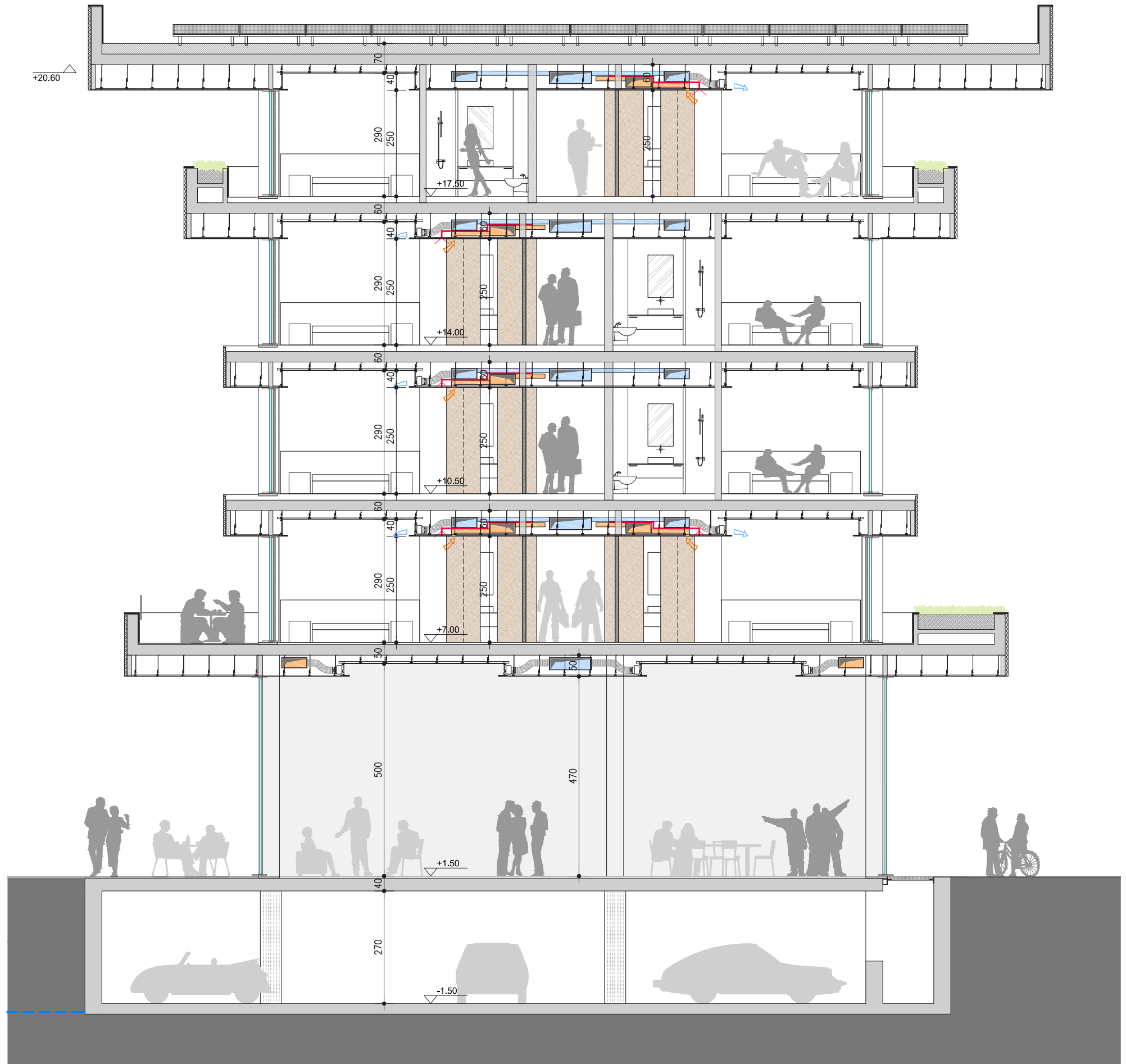
**Piano secondo**



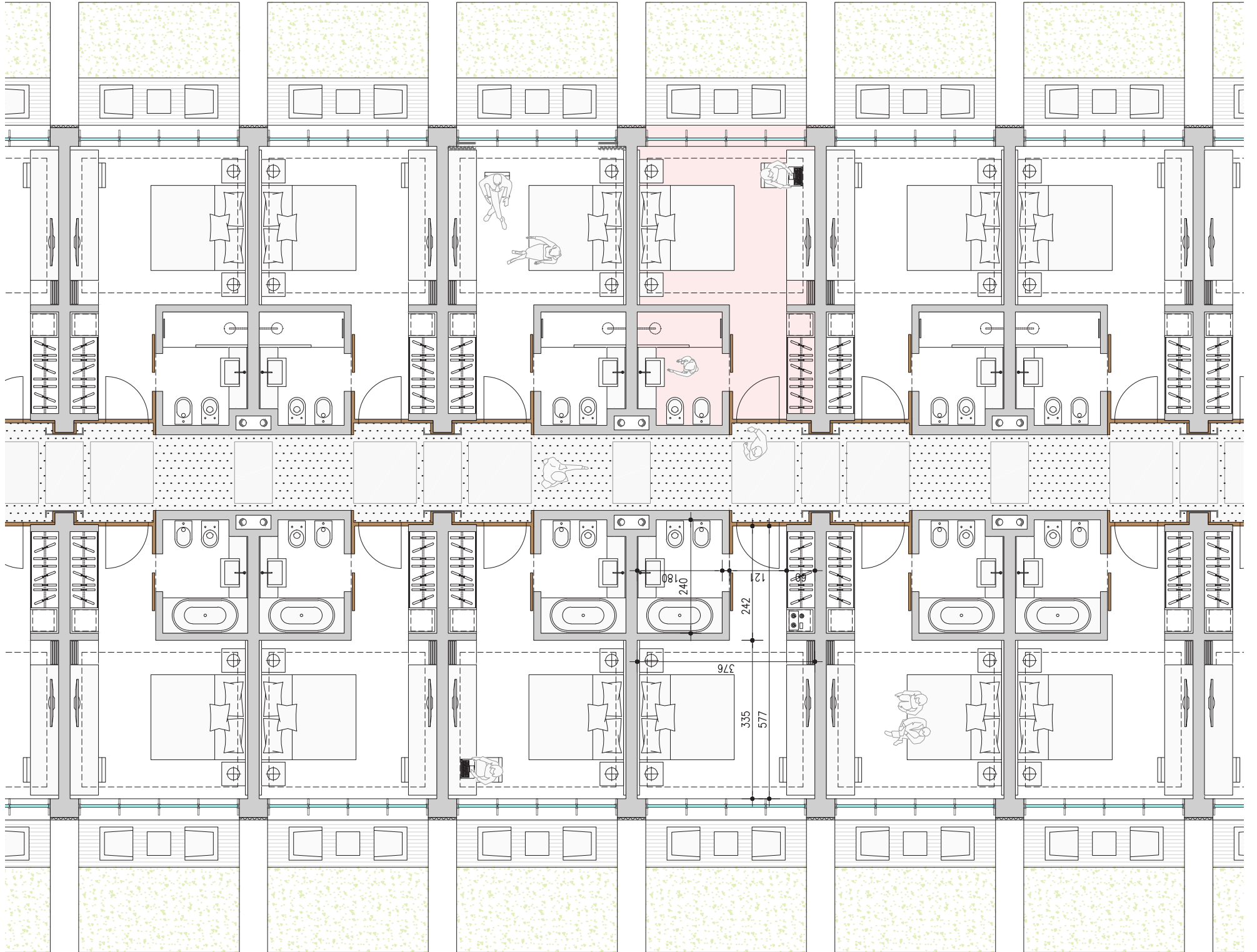
**Piano terzo**



# Sezione



# Tipologie di camere

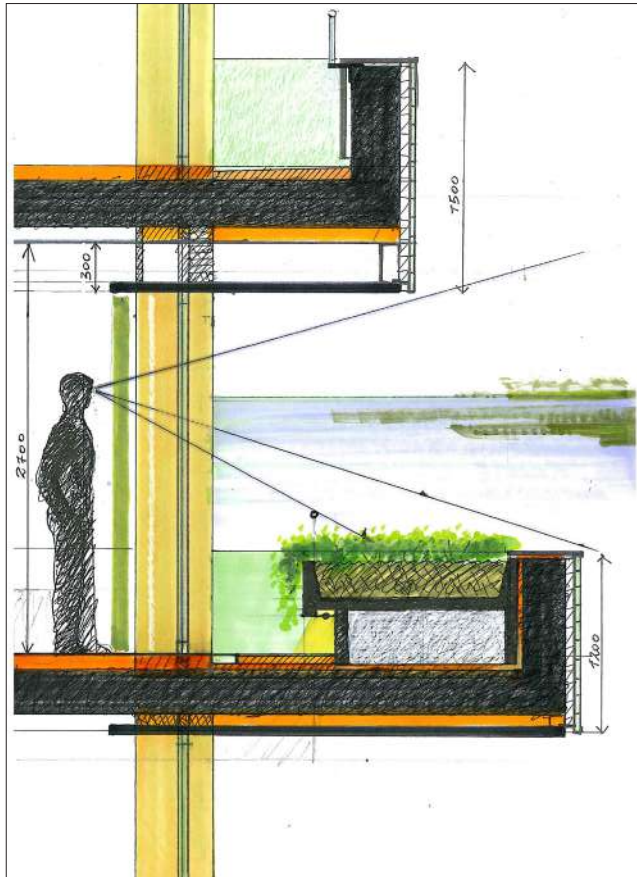




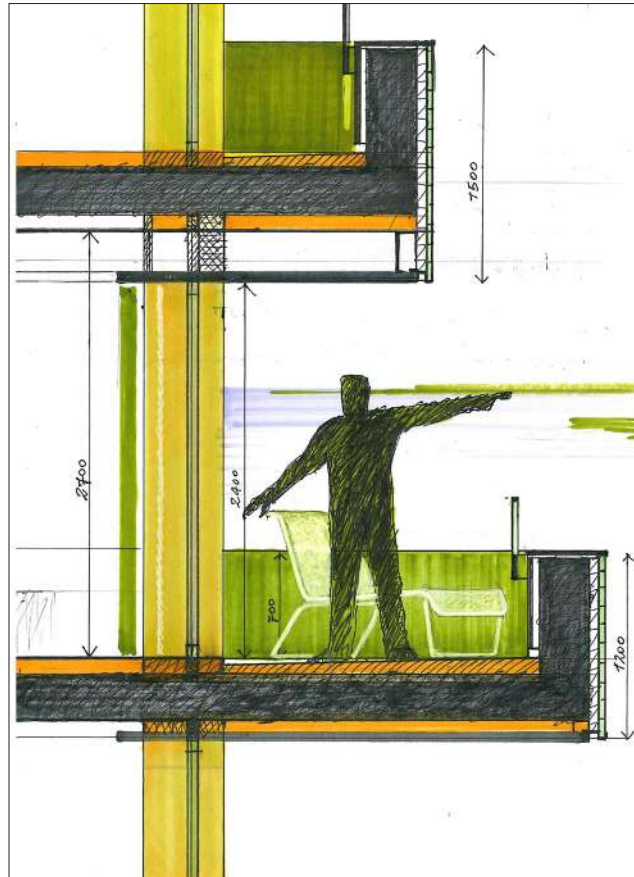
# Le logge



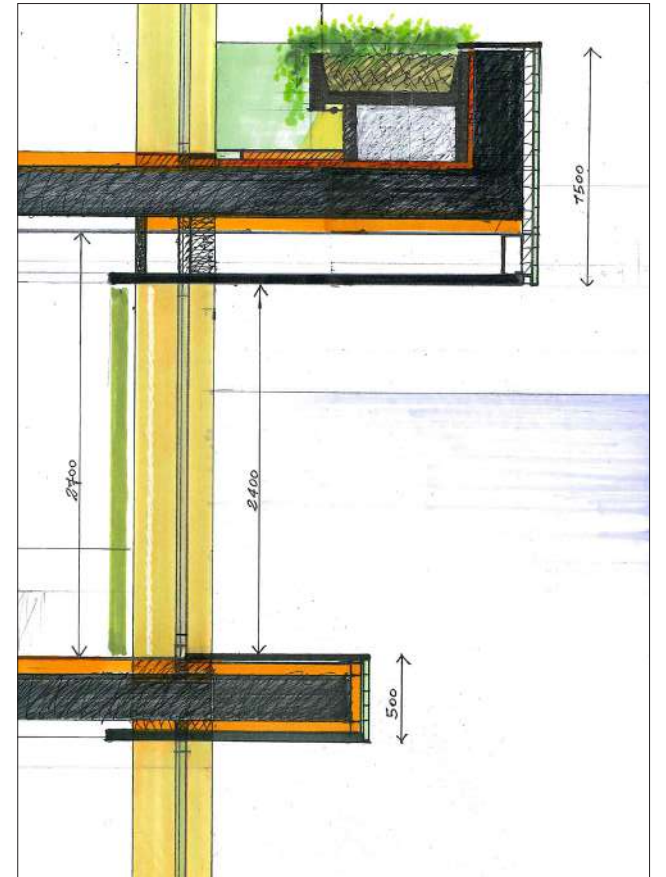




Loggia verde



Loggia - soggiorno



Loggia protetta

# Piano interrato

Fabbisogno (in mq) di parcheggi  
in rapporto al numero di camere

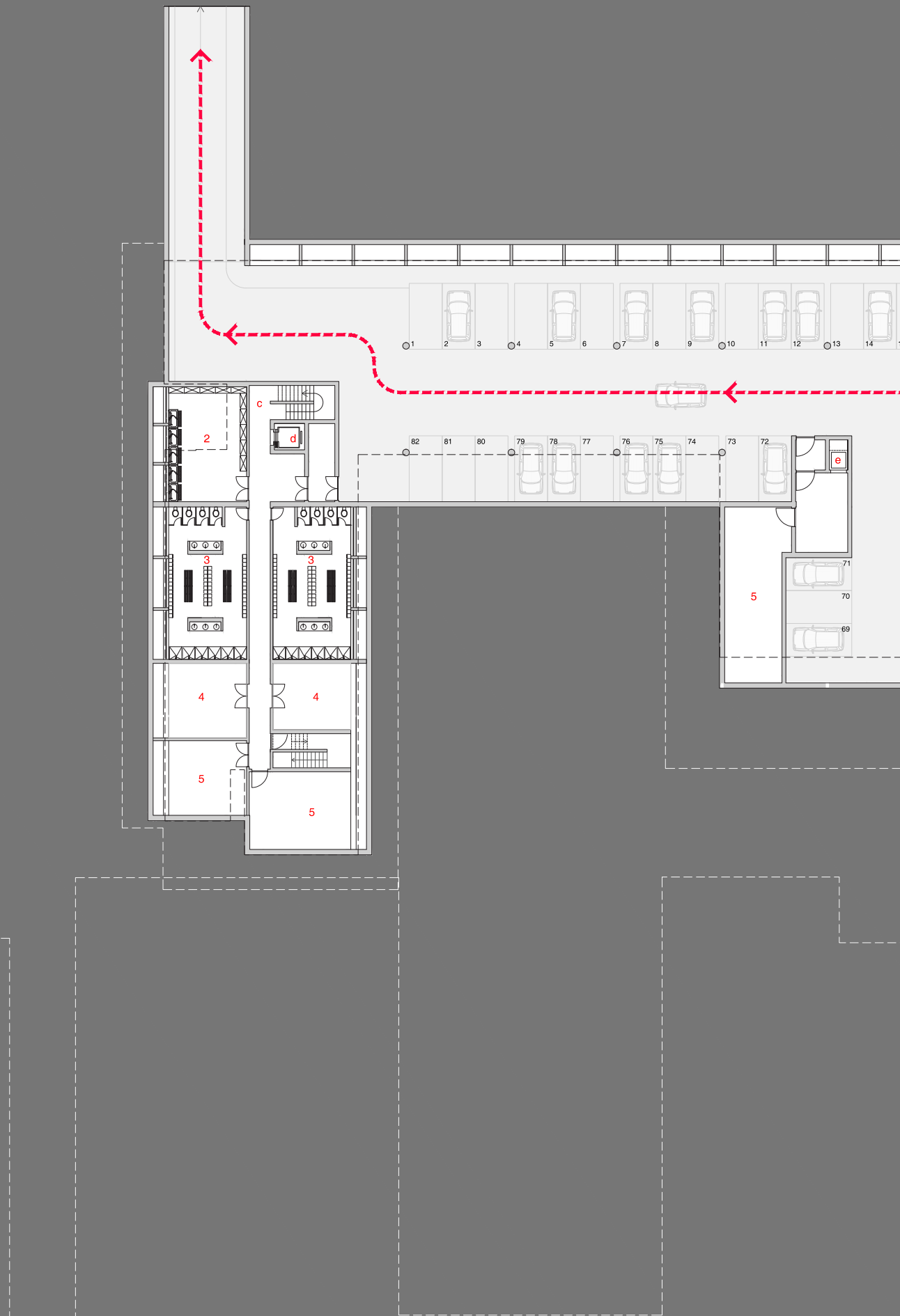
n. 284 camere x 2 persone = 568 persone

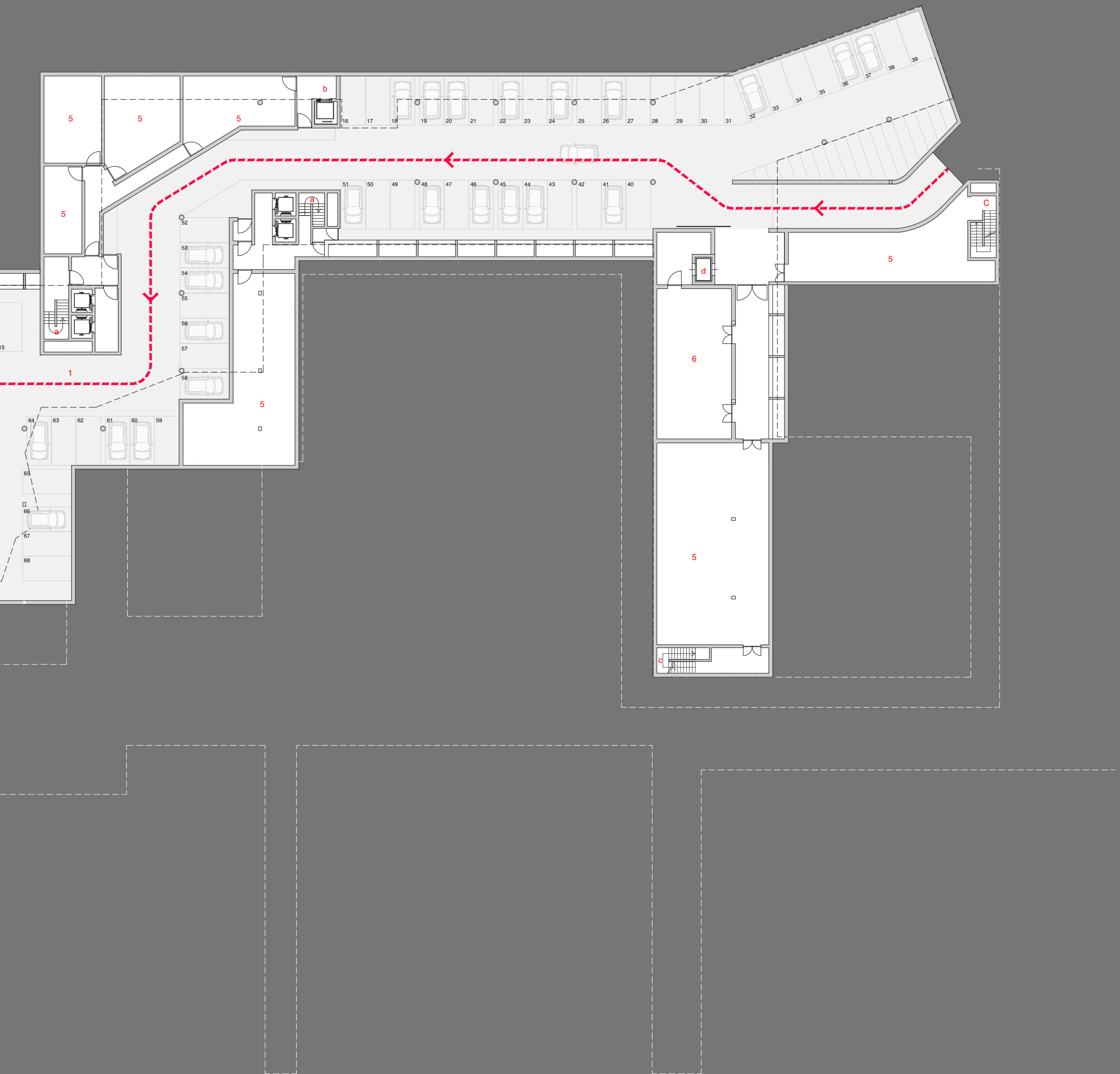
568 x 5 mq = 2840 mq (superficie necessaria)

Progetto = 2793 mq

2840 mq > 2793 mq      82 posti auto

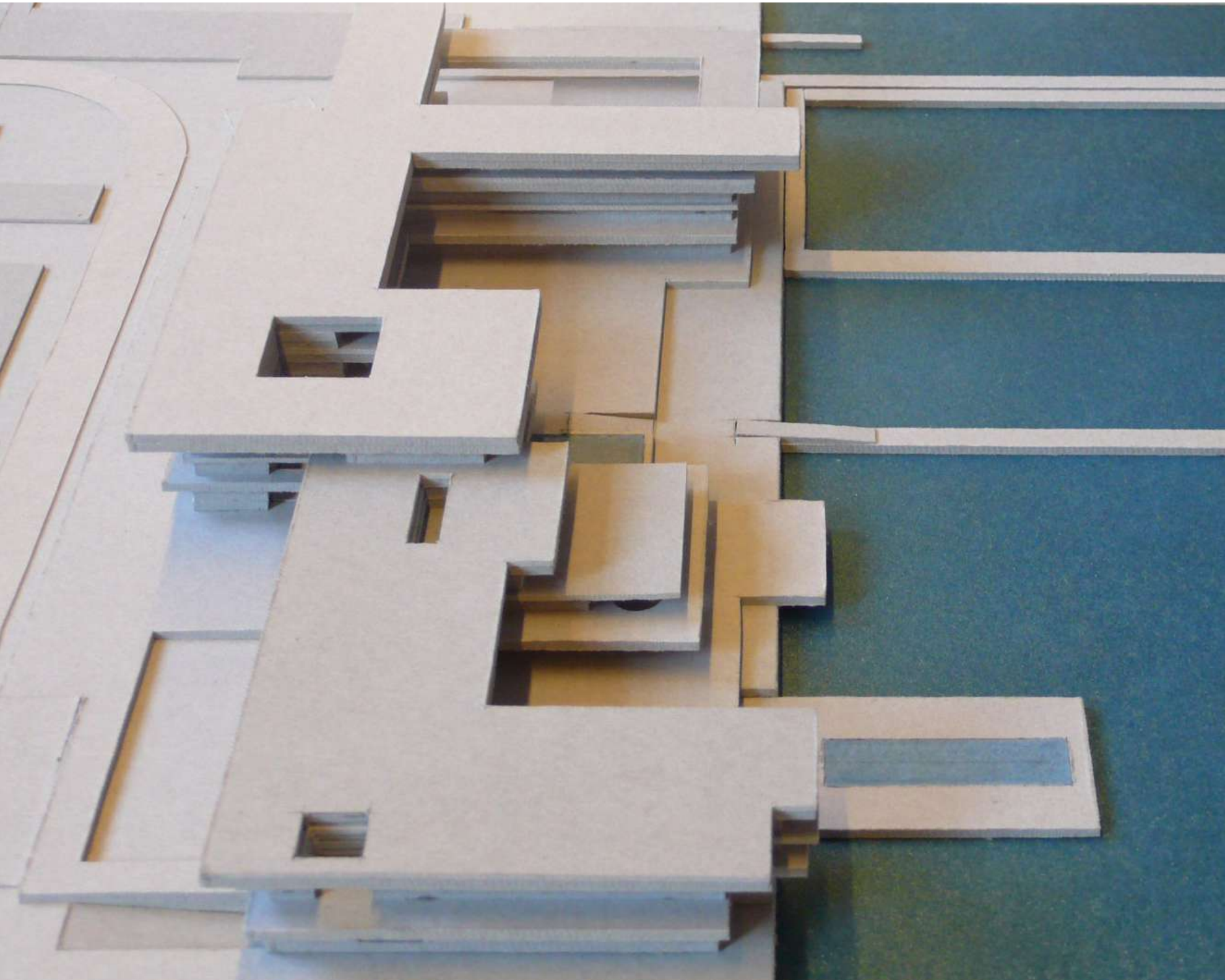
- |                                       |              |
|---------------------------------------|--------------|
| 1. parcheggio                         | (2793,00 mq) |
| 2. deposito lavanderia                | (55 mq)      |
| 3. spogliatoi e servizi del personale |              |
| spogliatoio maschile                  | (75 mq)      |
| spogliatoio femminile                 | (75 mq)      |
| 4. deposito                           | (635 mq)     |
| 5. locali tecnici                     | (912 mq)     |
| 6. deposito centro congressi          | (116 mq)     |
| a. scala e ascensori per ospiti       |              |
| b. ascensore di servizio              |              |
| c. scala di servizio                  |              |
| d. montacarichi di servizio           |              |
| e. ascensore servizio bar             |              |



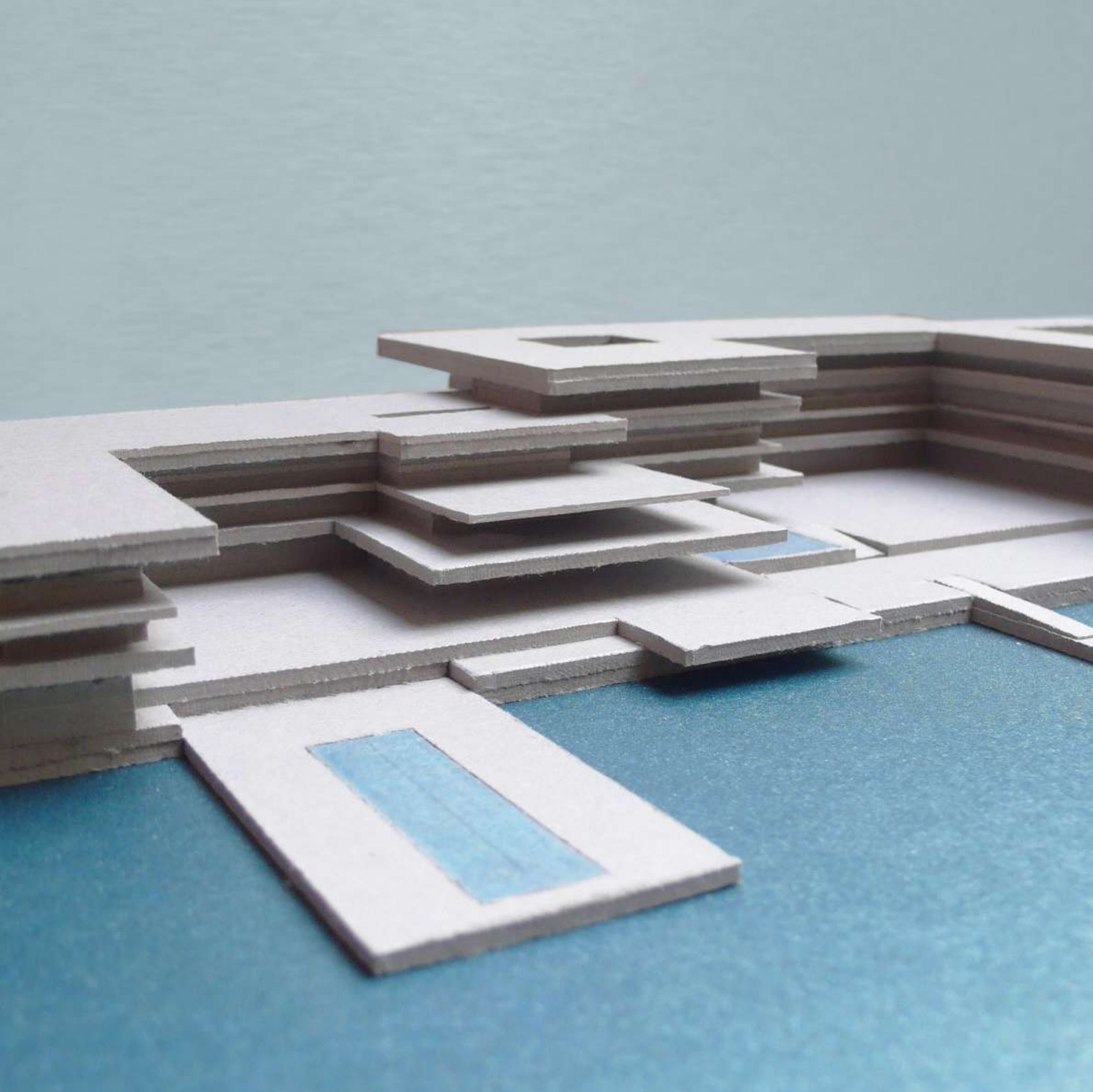
















quattroassociati architetti  
piazza Sant'Ambrogio, 25  
20123 Milano

REAL ESTATE BUSINESS AREA SRL  
via Anna Frank,2  
43123 Parma