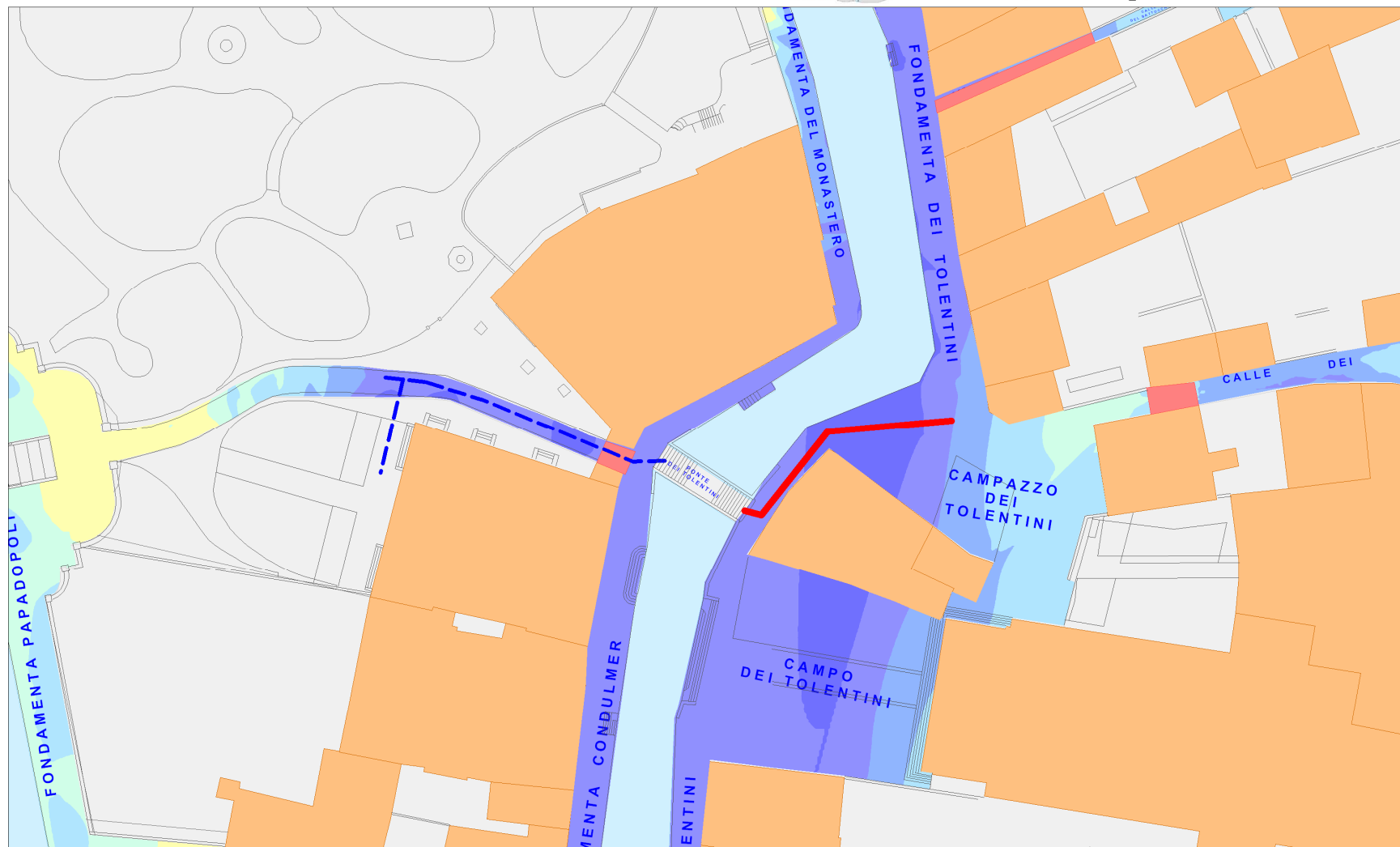


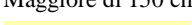




**SANTA CROCE**  
 percorso: TOLENTINI  
 da ponte Tolentini a campo Tolentini fronte  
 civico 200/b  
 lunghezza mt. 40  
 quota intervento + 115 cm





**Livelli di esondazione**

- Minore di 90 
- Tra 91 e 100 cm 
- Tra 101 e 110 cm 
- Tra 111 e 120 cm 
- Tra 121 e 130 cm 
- Tra 131 e 140 cm 
- Tra 141 e 150 cm 
- Maggiore di 150 cm 

**Livelli Cartografici**

- Edifici 
- Canali 

**Percorsi**

-  percorso interessato
-  altri percorsi

**Caratteristiche del percorso**

N° TAVOLE cm 400x100

10

N° CAVALLETTI h. cm 25

3

N° CAVALLETTI h. cm 50

19